

## Product datasheet for **TA326615**

### SPATA1 Rabbit Polyclonal Antibody

#### Product data:

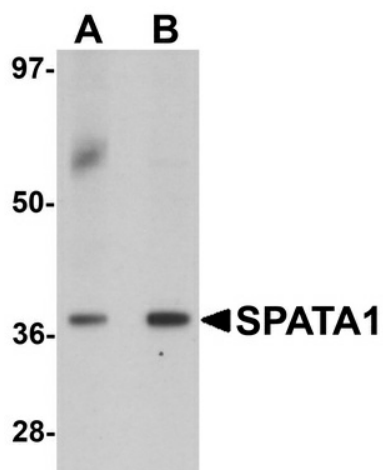
Product Type:	Primary Antibodies
Applications:	IF, IHC, WB
Recommended Dilution:	WB: 1 - 2 ug/mL, ICC: 2.5 ug/mL, IF: 20 ug/mL
Reactivity:	Human, Mouse
Host:	Rabbit
Isotype:	IgG
Clonality:	Polyclonal
Immunogen:	SPATA1 antibody was raised against an 18 amino acid synthetic peptide near the carboxy terminus of human SPATA1.
Formulation:	SPATA1 Antibody is supplied in PBS containing 0.02% sodium azide.
Concentration:	1 mg/ml
Purification:	SPATA1 Antibody is affinity chromatography purified via peptide column.
Conjugation:	Unconjugated
Storage:	Store at -20°C as received.
Stability:	Stable for 12 months from date of receipt.
Gene Name:	spermatogenesis associated 1
Database Link:	<a href="#">NP_001074941</a> <a href="#">Entrez Gene 64173</a> <a href="#">Entrez Gene 100505741</a> <a href="#">Human Q5VX52</a>
Background:	SPATA1 Antibody: SPATA1, a novel cell-surface protein, is involved in shaping the sperm head during spermatogenesis. SPATA1 is localized at chromosome 1q21. At least three isoforms of SPATA1 are known to exist. The longest is preferentially expressed in hematopoietic tissues. Its extracellular domain contains a single immunoglobulin-like domain, and its intracellular segment has two immunoreceptor tyrosine-based inhibition motifs (ITIMs). It is thought to have an important role in hematopoietic cell signaling. The mid-sized isoform contains a short intracellular part without ITIMs, while the shortest isoform lacks the transmembrane segment and represents a potential soluble protein (2, 3).



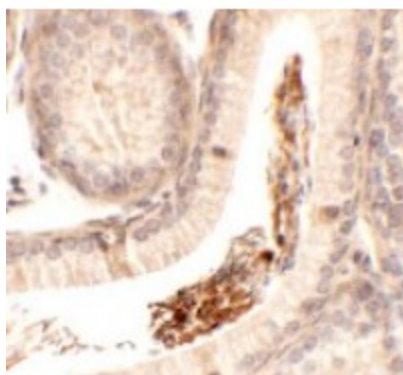
[View online »](#)

**Synonyms:** SP-2; SPAP1; sperm-specific protein SP-2; spermatogenesis associated 1; spermatogenesis associated protein 1

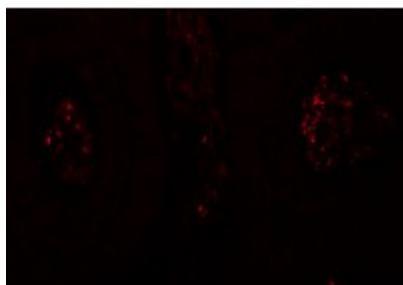
**Product images:**



Western blot analysis of SPATA1 in A20 cell lysate with SPATA1 antibody at (A) 1 and (B) 2 ug/mL.



Immunohistochemistry of SPATA1 in mouse testis tissue with SPATA1 antibody at 2.5 ug/mL.



Immunofluorescence of SPATA1 in mouse testis tissue with SPATA1 antibody at 20 ug/mL.