

Product datasheet for **TA326614**

RASSF6 Rabbit Polyclonal Antibody

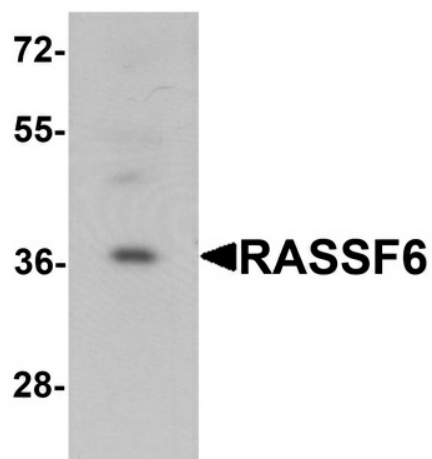
Product data:

Product Type:	Primary Antibodies
Applications:	WB
Recommended Dilution:	WB: 1 ug/mL
Reactivity:	Human
Host:	Rabbit
Isotype:	IgG
Clonality:	Polyclonal
Immunogen:	RASSF6 antibody was raised against a 14 amino acid synthetic peptide near the center of human RASSF6.
Formulation:	RASSF6 Antibody is supplied in PBS containing 0.02% sodium azide.
Concentration:	1 mg/ml
Purification:	RASSF6 Antibody is affinity chromatography purified via peptide column.
Conjugation:	Unconjugated
Storage:	Store at -20°C as received.
Stability:	Stable for 12 months from date of receipt.
Gene Name:	Ras association domain family member 6
Database Link:	NP_803876 Entrez Gene 166824 Human Q6ZTQ3
Background:	RASSF6 Antibody: RASSF family proteins are tumor suppressors that are frequently downregulated during the development of human cancer. RASSF6 (Ras association (RalGDS/AF-6) domain family member 6), a member of RASSF family, acts as a Ras effector protein / tumor suppressor. RASSF6 contains one Ras-associating domain and one SARAH domain. It is involved in the induction of apoptosis, through both caspase-dependent and caspase-independent pathways. Defects in RASSF6 may facilitate viral NFκ-B pathway and may play a vital role in infection.
Synonyms:	DKFZp686K23225



[View online »](#)

Product images:



Western blot analysis of RASSF6 in 293 cell lysate with RASSF6 antibody at 1 ug/mL.