

Product datasheet for **TA326613**

Estrogen induced gene 121 protein (KIAA1324) Rabbit Polyclonal Antibody

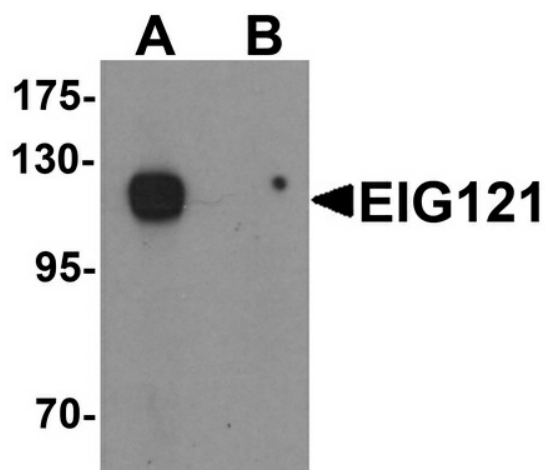
Product data:

Product Type:	Primary Antibodies
Applications:	IF, IHC, WB
Recommended Dilution:	WB: 1 ug/mL, ICC: 5 ug/mL, IF: 20 ug/mL
Reactivity:	Human
Host:	Rabbit
Isotype:	IgG
Clonality:	Polyclonal
Immunogen:	EIG121 antibody was raised against an 18 amino acid synthetic peptide near the carboxy terminus of human EIG121.
Formulation:	EIG121 Antibody is supplied in PBS containing 0.02% sodium azide.
Concentration:	1 mg/ml
Purification:	EIG121 Antibody is affinity chromatography purified via peptide column.
Conjugation:	Unconjugated
Storage:	Store at -20°C as received.
Stability:	Stable for 12 months from date of receipt.
Gene Name:	KIAA1324
Database Link:	NP_065826 Entrez Gene 57535 Human Q6UXG2
Background:	EIG121 Antibody: EIG121 (Estrogen-induced gene 121 protein) is thought to play a role as a marker of hyperestrogenic state and estrogen-related type I endometrial carcinoma. It belongs to the UPF0577 family. It is a 1013 amino acid single-pass transmembrane protein that, though expressed in normal endometrium, is overexpressed in endometriod tumors. As an evolutionarily conserved gene, EIG121 is also expressed during early xenopus development, showing maximum expression at the gastrula stage.
Synonyms:	EIG121
Protein Families:	Transmembrane

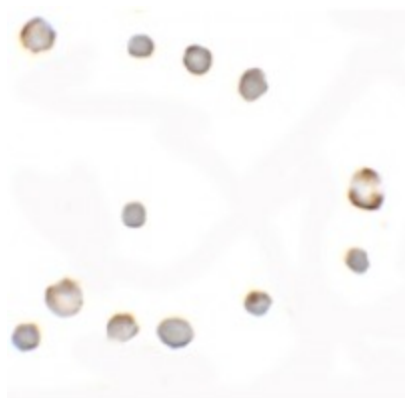


[View online »](#)

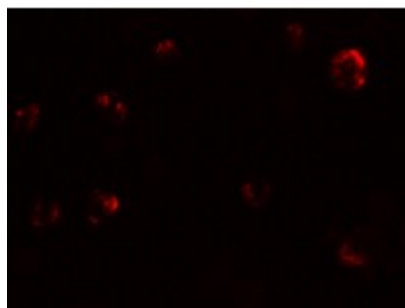
Product images:



Western blot analysis of EIG121 in MCF7 cell lysate with EIG121 antibody at 1 ug/mL in (A) the absence and (B) the presence of blocking peptide.



Immunocytochemistry of EIG121 in MCF7 cells with EIG121 antibody at 5 ug/mL.



Immunofluorescence of EIG121 in MCF7 cells with EIG121 antibody at 20 ug/mL.



Immunocytochemistry of EIG121 in MCF7 cells with EIG121 antibody at 5 ug/mL.