

Product datasheet for **TA326612**

ZNF346 Rabbit Polyclonal Antibody

Product data:

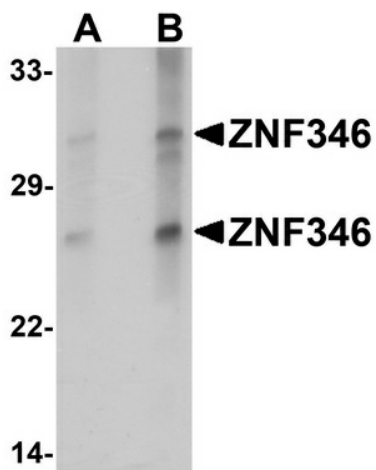
Product Type:	Primary Antibodies
Applications:	IF, IHC, WB
Recommended Dilution:	WB: 1 - 2 ug/mL, ICC: 5 ug/mL, IF: 20 ug/mL
Reactivity:	Human, Mouse
Host:	Rabbit
Isotype:	IgG
Clonality:	Polyclonal
Immunogen:	ZNF346 antibody was raised against a 20 amino acid synthetic peptide near the carboxy terminus of human ZNF346.
Formulation:	ZNF346 (CT) Antibody is supplied in PBS containing 0.02% sodium azide.
Concentration:	1 mg/ml
Purification:	ZNF346 (CT) Antibody is affinity chromatography purified via peptide column.
Conjugation:	Unconjugated
Storage:	Store at -20°C as received.
Stability:	Stable for 12 months from date of receipt.
Gene Name:	zinc finger protein 346
Database Link:	NP_036411 Entrez Gene 23567 Human Q9UL40
Background:	ZNF346 (CT) Antibody: ZNF346, also known as JAZ (just another zinc-finger protein), is a nucleolar, zinc finger protein which preferentially binds to double-stranded (ds) RNA or RNA/DNA hybrids with high affinity via C2H2 zinc fingers. ZNF346 contains four CH-type zinc finger motifs that are connected by long (28-38) amino acid linker sequences. ZNF346 is expressed in all tissues tested and localizes to the nucleus, primarily the nucleolus. ZNF346 is exported by exportin-5 but translocates back into nuclei by a facilitated diffusion mechanism. ZNF346 interacts with ILF3 in an RNA-independent manner and may be involved in cell growth and survival.
Synonyms:	JAZ; Zfp346



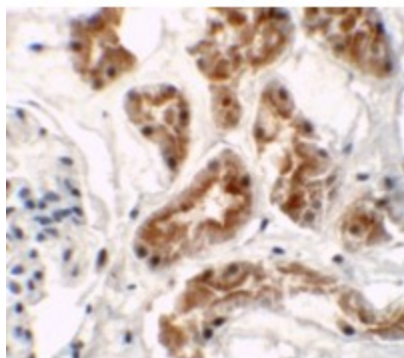
[View online »](#)

Protein Families: Druggable Genome

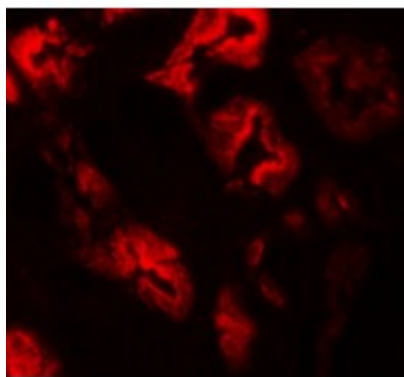
Product images:



Western blot analysis of ZNF346 in human kidney tissue lysate with ZNF346 antibody at (A) 1 and (B) 2 ug/mL.



Immunohistochemistry of ZNF346 (CT) in human kidney tissue with ZNF346 (CT) antibody at 5 ug/mL.



Immunofluorescence of ZNF346 in human kidney tissue with ZNF346 antibody at 20 ug/mL.