

Product datasheet for TA326611

Slc39a10 Rabbit Polyclonal Antibody

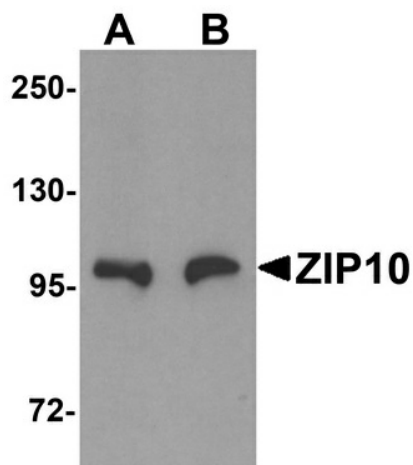
Product data:

Product Type:	Primary Antibodies
Applications:	IF, IHC, WB
Recommended Dilution:	WB: 1 - 2 ug/mL, ICC: 2.5 ug/mL, IF: 20 ug/mL
Reactivity:	Human, Mouse, Rat
Host:	Rabbit
Isotype:	IgG
Clonality:	Polyclonal
Immunogen:	ZIP10 antibody was raised against an 18 amino acid synthetic peptide near the center of human ZIP10.
Formulation:	ZIP10 Antibody is supplied in PBS containing 0.02% sodium azide.
Concentration:	1 mg/ml
Purification:	ZIP10 Antibody is affinity chromatography purified via peptide column.
Conjugation:	Unconjugated
Storage:	Store at -20°C as received.
Stability:	Stable for 12 months from date of receipt.
Gene Name:	solute carrier family 39 member 10
Database Link:	NP_065075 Entrez Gene 363229 Rat Q9ULF5
Background:	ZIP10 Antibody: ZIP10, also known as Slc39A10, is a widely expressed zinc transporter with nine transmembrane domains. Zinc is an essential ion for cells and plays significant roles in the growth, development, and differentiation. ZIP10 mRNA was found to be significantly decreased in the intestines and kidneys of hypothyroid rats and increased in those of hyperthyroid rats, indicating that ZIP10 is positively regulated by thyroid hormones. ZIP10 mRNA was also found to be upregulated in invasive and metastatic breast cancer and cell lines, suggesting that ZIP10 could serve as a possible marker for the metastatic phenotype and possibly a target for novel treatment strategies.
Synonyms:	LZT-Hs2

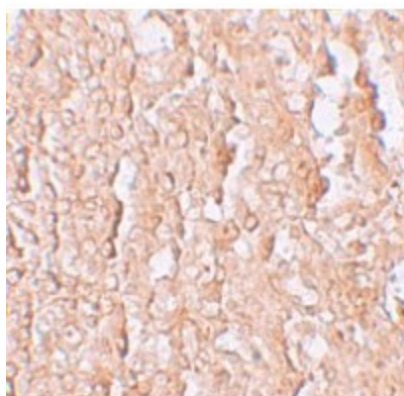


[View online »](#)

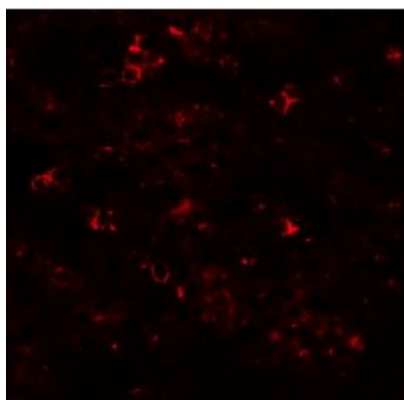
Product images:



Western blot analysis of ZIP10 in human spleen tissue lysate with ZIP10 antibody at (A) 1 and (B) 2 ug/mL.



Immunohistochemistry of ZIP10 in human spleen tissue with ZIP10 antibody at 2.5 ug/mL.



Immunofluorescence of ZIP10 in human spleen tissue with ZIP10 antibody at 20 ug/mL.