

## Product datasheet for **TA326609**

### mfSD2aa Rabbit Polyclonal Antibody

#### Product data:

Product Type:	Primary Antibodies
Applications:	IF, IHC, WB
Recommended Dilution:	WB: 1 - 2 ug/mL, ICC: 5 ug/mL, IF: 20 ug/mL
Reactivity:	Human, Mouse, Rat
Host:	Rabbit
Isotype:	IgG
Clonality:	Polyclonal
Immunogen:	MFSD2A antibody was raised against an 18 amino acid synthetic peptide near the carboxy terminus of human MFSD2A. The immunogen is located within the last 50 amino acids of MFSD2A.
Formulation:	MFSD2A Antibody is supplied in PBS containing 0.02% sodium azide.
Concentration:	1 mg/ml
Purification:	MFSD2A Antibody is affinity chromatography purified via peptide column.
Conjugation:	Unconjugated
Storage:	Antibody can be stored at 4°C up to one year. Antibodies should not be exposed to prolonged high temperatures.
Stability:	Stable for 12 months from date of receipt.
Gene Name:	major facilitator superfamily domain containing 2aa
Database Link:	<a href="#">NP_001129965</a> <a href="#">Q5U3U7</a>



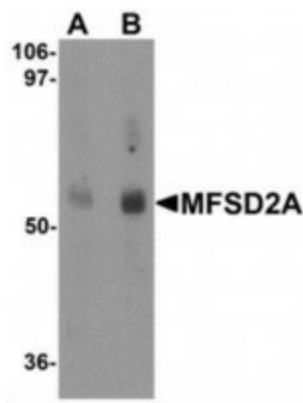
[View online »](#)

**Background:**

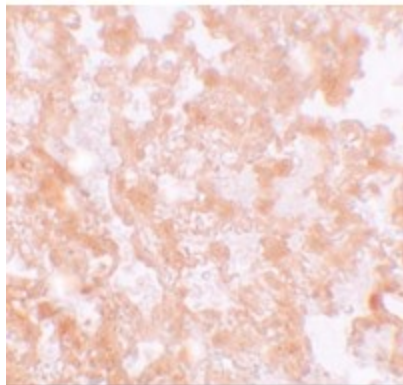
MFSD2A Antibody: Multidrug transporters, such as MFSD2A, are membrane proteins that expel a wide spectrum of cytotoxic compounds from the cell and render cells resistant to multiple drugs. Major Facilitator Superfamily (MFS) members are capable of transporting various substrates such as sugars, polyols, drugs, neurotransmitters, amino acids, peptides, and inorganic anions, although most members are substrate-specific. MFSD2A is a novel lung cancer tumor suppressor gene that regulates cell cycle progression and matrix attachment and has recently been described as the human receptor for syncytin-2, a retrovirus-derived protein mediating fusion of placental trophoblasts. MFSD2A is expressed in many tissues and is highly induced in liver and brown adipose tissue (BAT) during fasting. The activation of the betaAR signaling pathway plays a major role in the induction of MFSD2A expression during adaptive thermogenesis.

**Synonyms:**

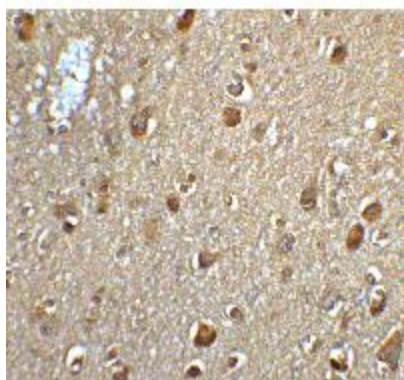
MCPH15; MFSD2; NLS1

**Product images:**

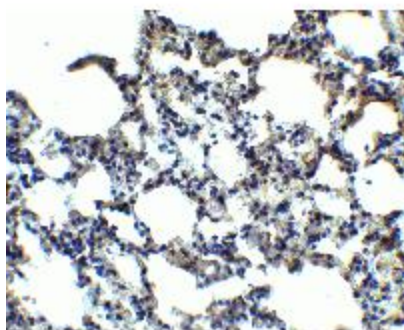
Western blot analysis of MFSD2A in rat lung tissue lysate with MFSD2A antibody at (A) 1 and (B) 2ug/ml.



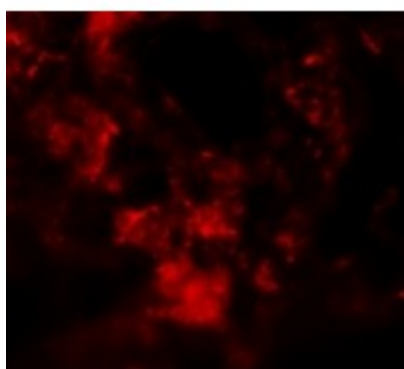
Immunohistochemistry of MFSD2A in rat lung tissue with MFSD2A antibody at 5ug/ml.



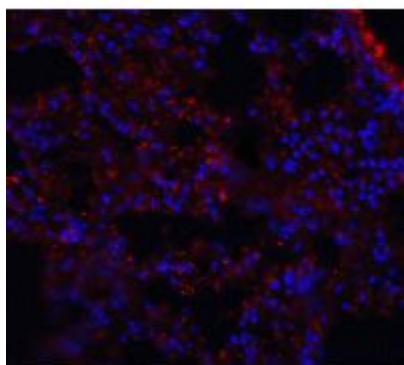
Immunohistochemistry of MFSD2A in human brain tissue with MFSD2A antibody at 5ug/ml.



Immunohistochemistry of MFSD2A in mouse lung tissue with MFSD2A antibody at 2.5ug/ml.



Immunofluorescence of MFSD2A in Rat Lung cells with MFSD2A antibody at 20ug/ml.



Immunofluorescence of MFSD2A in mouse lung tissue with MFSD2A antibody at 20ug/ml.