

## Product datasheet for **TA326608**

### KPNA7 Rabbit Polyclonal Antibody

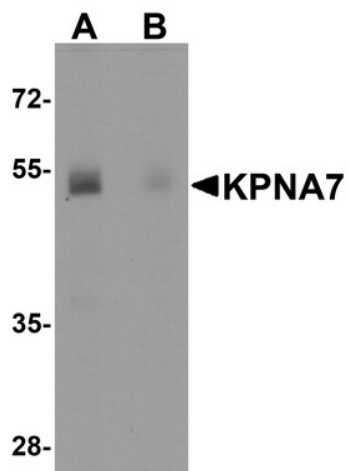
#### Product data:

Product Type:	Primary Antibodies
Applications:	IHC, WB
Recommended Dilution:	WB: 1 ug/mL, ICC: 5 ug/mL
Reactivity:	Human
Host:	Rabbit
Isotype:	IgG
Clonality:	Polyclonal
Immunogen:	KPNA7 antibody was raised against a 13 amino acid synthetic peptide near the amino terminus of human KPNA7.
Formulation:	KPNA7 Antibody is supplied in PBS containing 0.02% sodium azide.
Concentration:	1 mg/ml
Purification:	KPNA7 Antibody is affinity chromatography purified via peptide column.
Conjugation:	Unconjugated
Storage:	Store at -20°C as received.
Stability:	Stable for 12 months from date of receipt.
Gene Name:	karyopherin subunit alpha 7
Database Link:	<a href="#">NP_001139187</a> <a href="#">Entrez Gene 402569 Human</a> <a href="#">A9QM74</a>
Background:	KPNA7 Antibody: Karyopherin, a cytosolic and heterodimeric protein complex consisting of alpha and beta subunits, is responsible for targeting proteins with nuclear localization signals to the nuclear pore complex (NPC) by an energy requiring, Ran-dependent mechanism. The alpha subunit and imported substrate enter the nucleus and accumulate in the nucleoplasm, while the beta subunit accumulates at the NPC. KPNA7 is most closely related to KPNA2, but unlike KPNA2, KPNA7 primarily localizes to the nucleus. It has been suggested that KPNA7 may play a role in the transport of essential nuclear proteins required for early embryogenesis.
Synonyms:	IPOA8

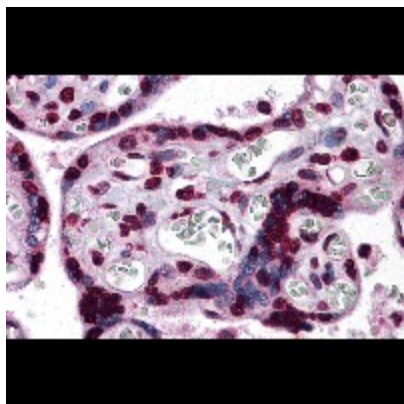


[View online »](#)

## Product images:



Western blot analysis of KPNA7 in human spleen with KPNA7 antibody at 1 ug/mL in (A) the absence and (B) the presence of blocking peptide.



Immunohistochemistry of KPNA7 in human placenta tissue with KPNA7 antibody at 5 ug/mL.