

Product datasheet for **TA326607**

KPNA5 Rabbit Polyclonal Antibody

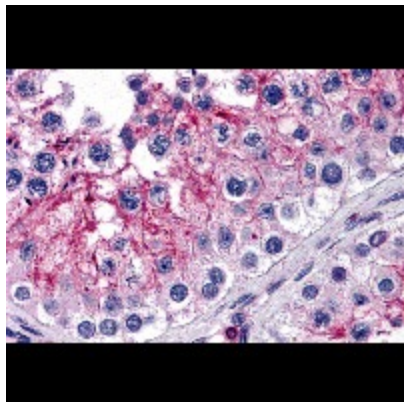
Product data:

Product Type:	Primary Antibodies
Applications:	IHC
Recommended Dilution:	IHC: 5 ug/mL
Reactivity:	Human
Host:	Rabbit
Isotype:	IgG
Clonality:	Polyclonal
Immunogen:	KPNA5 antibody was raised against a 16 amino acid synthetic peptide near the amino terminus of human KPNA5.
Formulation:	KPNA5 Antibody is supplied in PBS containing 0.02% sodium azide.
Concentration:	1 mg/ml
Purification:	KPNA5 Antibody is affinity chromatography purified via peptide column.
Conjugation:	Unconjugated
Storage:	Store at -20°C as received.
Stability:	Stable for 12 months from date of receipt.
Gene Name:	karyopherin subunit alpha 5
Database Link:	NP_036448 Entrez Gene 3841 Human Q15131
Background:	KPNA5 Antibody: Karyopherin, a cytosolic and heterodimeric protein complex consisting of alpha and beta subunits, is responsible for targeting proteins with nuclear localization signals to the nuclear pore complex (NPC) by an energy requiring, Ran-dependent mechanism. The alpha subunit and imported substrate enter the nucleus and accumulate in the nucleoplasm, while the beta subunit accumulates at the NPC. KPNA5 belongs to a subfamily within the KPNA family that also includes KPNA4 and 6 and is thought to be involved in NLS-dependent protein import into the nucleus.
Synonyms:	IPOA7; KPNA7



[View online »](#)

Product images:



Immunohistochemistry of KPNA5 in human testis tissue with KPNA5 antibody at 5 ug/mL.