

## Product datasheet for **TA326606**

### APOA4 Rabbit Polyclonal Antibody

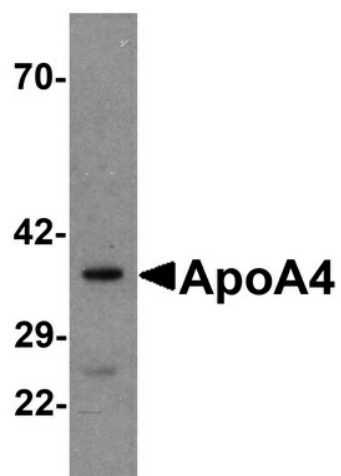
#### Product data:

Product Type:	Primary Antibodies
Applications:	WB
Recommended Dilution:	WB: 1 ug/mL
Reactivity:	Human
Host:	Rabbit
Isotype:	IgG
Clonality:	Polyclonal
Immunogen:	ApoA4 antibody was raised against a 15 amino acid synthetic peptide near the carboxy terminus of human ApoA4.
Formulation:	ApoA4 Antibody is supplied in PBS containing 0.02% sodium azide.
Concentration:	1 mg/ml
Purification:	ApoA4 Antibody is affinity chromatography purified via peptide column.
Conjugation:	Unconjugated
Storage:	Store at -20°C as received.
Stability:	Stable for 12 months from date of receipt.
Gene Name:	apolipoprotein A4
Database Link:	<a href="#">NP_000473</a> <a href="#">Entrez Gene 337 Human</a> <a href="#">P06727</a>
Background:	ApoA4 Antibody: Apolipoprotein A4 (also known as ApoA-IV) is a plasma protein that is an O-linked glycoprotein after proteolytic processing. ApoA4 is a major constituent of HDL and it also can be found on the surface of newly synthesized chylomicrons. The physiological function of ApoA4 is not completely identified so far, but evidence from several in vitro studies indicate that this apolipoprotein is involved in several steps of the reverse cholesterol transport pathway, which transports cholesterol from peripheral cells back to the liver.
Synonyms:	MGC142154; MGC142156
Protein Families:	Secreted Protein



[View online »](#)

## Product images:



Western blot analysis of ApoA4 in human liver tissue lysate with ApoA4 antibody at 1 ug/mL.