

Product datasheet for **TA326604**

Sumo 2 (SUMO2) Rabbit Polyclonal Antibody

Product data:

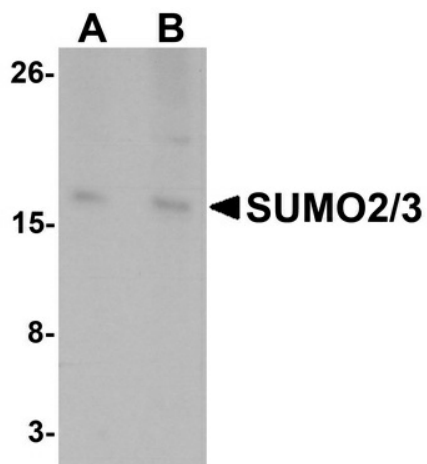
Product Type:	Primary Antibodies
Applications:	IF, IHC, WB
Recommended Dilution:	WB: 1 - 2 ug/mL, ICC: 5 ug/mL, IF: 20 ug/mL
Reactivity:	Human, Mouse, Rat
Host:	Rabbit
Isotype:	IgG
Clonality:	Polyclonal
Immunogen:	SUMO2/3 antibody was raised against a 15 amino acid synthetic peptide near the carboxy terminus of human SUMO2.
Formulation:	SUMO2/3 Antibody is supplied in PBS containing 0.02% sodium azide.
Concentration:	1 mg/ml
Purification:	SUMO2/3 Antibody is affinity chromatography purified via peptide column.
Conjugation:	Unconjugated
Storage:	Antibody can be stored at 4°C up to one year. Antibodies should not be exposed to prolonged high temperatures.
Stability:	Stable for 12 months from date of receipt.
Gene Name:	small ubiquitin-like modifier 2
Database Link:	AAH71645 Entrez Gene 6613 Human P61956
Background:	SUMO2/3 Antibody: Small ubiquitin-like modifiers (SUMOs) are a family of small, related proteins (Sumo-1/2/3/4) that can be enzymatically attached to a target protein by a post-translational modification process termed sumoylation, which is a major regulator of protein function in cellular processes such as nuclear transport, transcriptional regulation, apoptosis and protein stability. All SUMO proteins localize to the nucleus and are covalently conjugated, affecting protein structure, function and interactions. SUMO2 and 3 are 96% identical and are more mobile within nucleus relative to SUMO1. Specific functional differences between SUMO1 and SUMO2 and 3 remain to be identified.



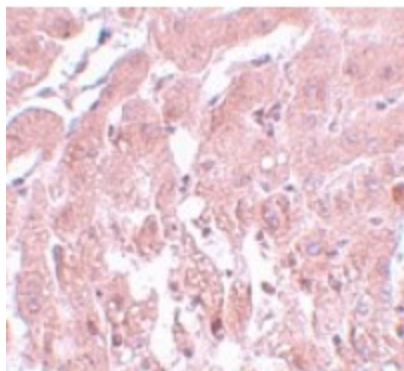
[View online »](#)

Synonyms: HSMT3; Smt3A; SMT3B; SMT3H2; SUMO3

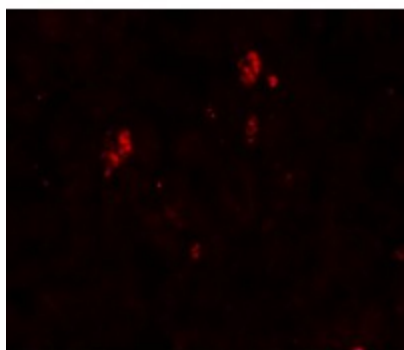
Product images:



Western blot analysis of SUMO3 in rat liver tissue lysate with SUMO3 antibody at (A) and (B) 2 ug/mL.



Immunohistochemistry of SUMO2/3 in rat liver tissue with SUMO2/3 antibody at 5 ug/mL.



Immunofluorescence of SUMO2/3 in rat liver tissue with SUMO2/3 antibody at 20 ug/mL.