

Product datasheet for **TA326593**

Slc38a1 Mouse Monoclonal Antibody [Clone ID: S104-32]

Product data:

Product Type:	Primary Antibodies
Clone Name:	S104-32
Applications:	WB
Reactivity:	Human, Mouse, Rat
Host:	Mouse
Isotype:	IgG1
Clonality:	Monoclonal
Immunogen:	Fusion protein amino acids 1- 63 of rat SNAT1
Formulation:	PBS pH7.4, 50% glycerol
Concentration:	lot specific
Purification:	Protein G Purified
Conjugation:	Unconjugated
Storage:	Store at -20°C as received.
Stability:	Stable for 12 months from date of receipt.
Gene Name:	solute carrier family 38, member 1
Database Link:	NP_620187 Entrez Gene 81539 Human Entrez Gene 105727 Mouse Entrez Gene 170567 Rat Q9JM15

Background: The sodium-coupled neutral amino acid transporters (SNAT) of the SLC38 gene family include System A subtypes SNAT1, SNAT2 and SNAT4 and System N subtypes SNAT3 and SNAT5. The SLC38 transporters are essential for the uptake of nutrients, energy production, metabolism, detoxification, and the cycling of neurotransmitters. The SNAT1 protein, also designated ATA1 or NAT2 is encoded by the human gene SLC38A1 which maps to chromosome 12q13.11. SNAT1 is responsible for the transport of glutamine, an intermediate in the synthesis of urea, and may be involved in the generation of glutamate in the retina. SNAT1 protein may be detected in some tissues such as heart, brain and placenta and expression levels are enriched in certain neuronal populations within the CNS. SNAT1 is not present in astrocytes.

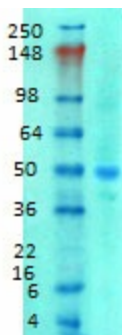
Synonyms: ATA1; NAT2; SAT1; SNAT1



[View online »](#)

Note: Detects ~50kDa.

Product images:



Western blot analysis of SNAT1 in rat brain membrane tissues, using a 1:1000 dilution of the antibody