

Product datasheet for **TA326589**

Slc14a2 Rabbit Polyclonal Antibody

Product data:

Product Type:	Primary Antibodies
Applications:	WB
Recommended Dilution:	WB: 1:1000
Reactivity:	Rat, Mouse
Host:	Rabbit
Clonality:	Polyclonal
Immunogen:	AA911-929 of the rat sequence
Formulation:	PBS, 50% glycerol and 0.09% sodium azide
Concentration:	lot specific
Purification:	Affinity Purified
Conjugation:	Unconjugated
Storage:	Store at -20°C as received.
Stability:	Stable for 12 months from date of receipt.
Gene Name:	solute carrier family 14 member 2
Database Link:	NP_062220 Entrez Gene 27411 Mouse Entrez Gene 54302 Rat Q62668

Background: UT-A1, a kidney-specific urea transporter is expressed in the renal collecting duct where it mediates trans-epithelial urea transport and is a target for regulation by vasopressin. Urea movement out of the collecting duct in the inner medulla of the kidney allows accumulation of urea in the medullary interstitium, thereby allowing maximum water reabsorption from the collecting ducts. (The antibody also recognizes a second protein from the UT-A gene driven by transcription from an alternative promotor and expressed in the thin descending limb of Henle, viz. UT-A2.)

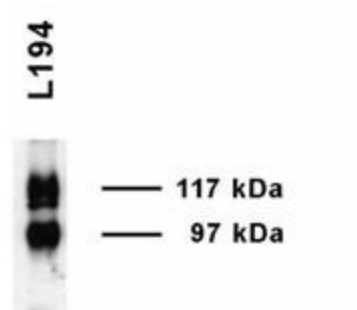
Synonyms: FLJ16167; hUT-A6; HUT2; MGC119566; MGC119567; UT-A2; UT2; UTA; UTR

Note: Detects ~97 and 127kDa.



[View online »](#)

Product images:



Western blot analysis of UT-A1 in rat inner medulla using a 1:1000 dilution of the antibody