

Product datasheet for **TA326588**

Slc12a5 Mouse Monoclonal Antibody [Clone ID: S1-12]

Product data:

Product Type:	Primary Antibodies
Clone Name:	S1-12
Applications:	WB
Recommended Dilution:	IHC: 1:300
Reactivity:	Human, Mouse, Rat
Host:	Mouse
Isotype:	IgG2a
Clonality:	Monoclonal
Immunogen:	Fusion protein amino acids 932-1043 corresponding to rat KCC2
Formulation:	PBS pH7.4, 50% glycerol
Concentration:	lot specific
Purification:	Protein G Purified
Conjugation:	Unconjugated
Storage:	Store at -20°C as received.
Stability:	Stable for 12 months from date of receipt.
Gene Name:	solute carrier family 12 member 5
Database Link:	NP_599190 Entrez Gene 57138 Mouse Entrez Gene 57468 Human Entrez Gene 171373 Rat Q63633

Background: KCC2 is a member of the cation-chloride cotransporter gene family . It acts as a K-Cl cotransporter. KCCs normally lower intracellular chloride concentrations below the electrochemical equilibrium potential and depending on the chemical concentration gradients of potassium and chloride, KCC2 can operate as a net efflux or influx pathway. It is proposed to act as the main chloride extruder to promote fast hyperpolarizing postsynaptic inhibition in the brain . KCC2 is expressed at high levels in neurons throughout the nervous system and immunofluorescence shows that the protein is localized at inhibitory synapses of the spinal cord . Studies in mice have shown that KCC2 reduces GABA's inhibitory signaling, resulting in motor defects, epilepsy, and anxiety-like behavior.

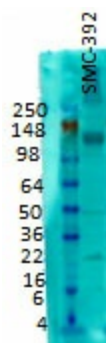


[View online »](#)

Synonyms: hKCC2; KCC2; KIAA1176

Note: Detects ~140kDa.

Product images:



Western blot analysis of KCC2 on rat membrane tissues using a 1:1000 dilution of the antibody