

## Product datasheet for **TA326587**

### Slc12a3 Rabbit Polyclonal Antibody

#### Product data:

Product Type:	Primary Antibodies
Applications:	IF, WB
Recommended Dilution:	WB: 1:1000
Reactivity:	Human, Mouse, Rat
Host:	Rabbit
Clonality:	Polyclonal
Immunogen:	AA74-95 (rat), 76-97 (hum)
Formulation:	PBS, 50% glycerol and 0.09% sodium azide
Concentration:	lot specific
Purification:	Affinity Purified
Conjugation:	Unconjugated
Storage:	Store at -20°C as received.
Stability:	Stable for 12 months from date of receipt.
Gene Name:	solute carrier family 12 member 3
Database Link:	<a href="#">NP_062218</a> <a href="#">Entrez Gene 6559 HumanEntrez Gene 20497 MouseEntrez Gene 54300 Rat P55018</a>

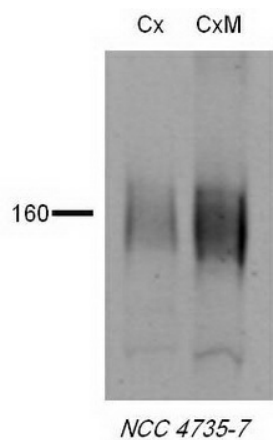
**Background:** NCC, a thiazide-sensitive NaCl co-transporter, is found on the apical membrane of the distal convoluted tubule, where it is the principal mediator of Na<sup>+</sup> and Cl<sup>-</sup> reabsorption in this segment of the nephron. It is activated by phosphorylation, and has been implicated in renal NaCl and K<sup>+</sup> homeostasis. Regulation of NCC expression and phosphorylation by dietary NaCl restriction appears to involve SGK1. In experiments with angiotensin II-infused mice, increased sensitivity to Ang II may involve over-activity of NCC. Therefore, NCC is the target of thiazide diuretics used in the treatment of hypertension. Molecular experiments have also shown that NCC has been detected in the lens cortex, core and fiber cells of a rat.

**Synonyms:** FLJ96318; NCCT; TSC

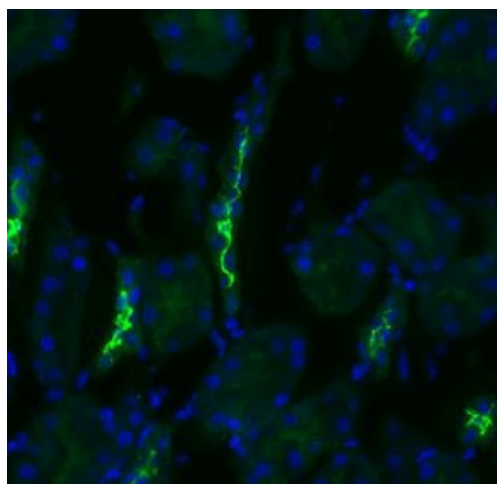
**Note:** Detects ~160kDa.



[View online »](#)

**Product images:**

Western blot analysis of NCC in rat tissues using a 1:1000 dilution of the antibody



IF analysis of NCC in rat kidney tissues, showing using a 1:200 dilution of the antibody