

Product datasheet for **TA326586**

Slc12a1 Rabbit Polyclonal Antibody

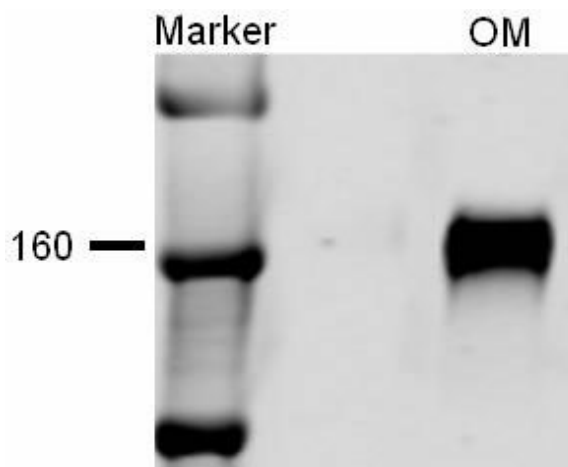
Product data:

Product Type:	Primary Antibodies
Applications:	WB
Recommended Dilution:	WB: 1:1000
Reactivity:	Human, Mouse, Rat
Host:	Rabbit
Clonality:	Polyclonal
Immunogen:	AA109 to 129 of the rat sequence
Formulation:	PBS, 50% glycerol and 0.09% sodium azide
Concentration:	lot specific
Purification:	Affinity Purified
Conjugation:	Unconjugated
Storage:	Store at -20°C as received.
Stability:	Stable for 12 months from date of receipt.
Gene Name:	solute carrier family 12 member 1
Database Link:	NP_062007 Entrez Gene 6557 Human Entrez Gene 20495 Mouse Entrez Gene 25065 Rat
Background:	NKCC2, a kidney-specific member of the cation chloride co-transporter family SLC12, facilitates transport of sodium, potassium, and chloride ions from the lumen of the renal thick ascending limb into the cell . Transport of sodium dilutes the luminal fluid, decreasing its osmolality creating an osmotic driving force for water reabsorption in the connecting tubule and cortical collecting duct under the influence of the hormone vasopressin. NKCC2 is found on the apical surface of the thick ascending limb of the loop of Henle and is blocked by loop diuretics such as furosemide .
Synonyms:	BSC1; MGC48843; NKCC2
Note:	Detects ~160kDa.



[View online »](#)

Product images:



Western blot analysis of NKCC2 in rat kidney tissue using a 1:1000 dilution of the antibody