

Product datasheet for **TA326569**

Lrp4 Mouse Monoclonal Antibody [Clone ID: S207-27]

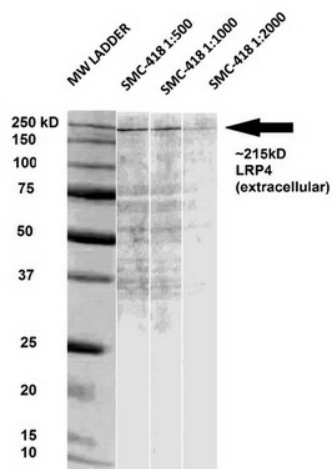
Product data:

Product Type:	Primary Antibodies
Clone Name:	S207-27
Applications:	WB
Recommended Dilution:	WB: 1ug/ml
Reactivity:	Mouse, Rat
Host:	Mouse
Isotype:	IgG2a
Clonality:	Monoclonal
Immunogen:	Fusion protein amino acids 26-
Formulation:	PBS pH7.4, 50% glycerol
Concentration:	lot specific
Purification:	Protein G Purified
Conjugation:	Unconjugated
Storage:	Store at -20°C as received.
Stability:	Stable for 12 months from date of receipt.
Gene Name:	LDL receptor related protein 4
Database Link:	NP_112612 Entrez Gene 228357 Mouse Entrez Gene 83469 Rat
Background:	Potential cell surface endocytic receptor, which binds and internalizes extracellular ligands for degradation by lysosomes. It is involved in the negative regulation of the canonical Wnt signaling pathway, being able to antagonize the LRP6-mediated activation of this pathway.
Synonyms:	KIAA0816; LRP10; MEGF7
Note:	Detects ~215kDa. Degradation product can be seen at ~150kDa



[View online »](#)

Product images:



Western blot of rat brain membrane lysates showing the detection of ~215 kDa LRP4? protein using Anti-LRP4 antibody [S207-27] (TA326569).?? Lane 1: MW ladder. Lane 2: Anti-LRP4 (1:500). Lane 3: Anti-LRP4 (1:1000). Lane 4: Anti-LRP4 (1:2000). Load: 33 μ RBM