

## Product datasheet for **TA326566**

### **Kcnt1 Mouse Monoclonal Antibody [Clone ID: S3-26]**

#### **Product data:**

Product Type:	Primary Antibodies
Clone Name:	S3-26
Applications:	WB
Recommended Dilution:	WB: 1-10ug/ml, IHC: 0.1-1.0ug/ml, IF: 1.0-10ug/ml
Reactivity:	Human (weak), Mouse, Rat
Host:	Mouse
Isotype:	IgG1
Clonality:	Monoclonal
Immunogen:	Fusion protein amino acids 1168-1237 of rat Slo2.2 (Slack); NP_068625
Formulation:	PBS pH7.4, 50% glycerol
Concentration:	lot specific
Purification:	Protein G Purified
Conjugation:	Unconjugated
Storage:	Store at -20°C as received.
Stability:	Stable for 12 months from date of receipt.
Gene Name:	potassium sodium-activated channel subfamily T member 1
Database Link:	<a href="#">NP_068625</a> <a href="#">Entrez Gene 57582 HumanEntrez Gene 227632 MouseEntrez Gene 60444 Rat Q9Z258</a>



[View online »](#)

**Background:**

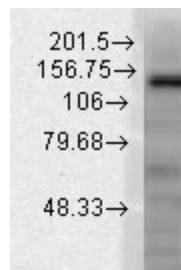
Ion channels are integral membrane proteins that help establish and control the small voltage gradient across the plasma membrane of living cells by allowing the flow of ions down their electrochemical gradient. They are present in the membranes that surround all biological cells because their main function is to regulate the flow of ions across this membrane. Whereas some ion channels permit the passage of ions based on charge, others conduct based on a ionic species, such as sodium or potassium. Furthermore, in some ion channels, the passage is governed by a gate which is controlled by chemical or electrical signals, temperature, or mechanical forces. There are a few main classifications of gated ion channels. There are voltage- gated ion channels, ligand- gated, other gating systems and finally those that are classified differently, having more exotic characteristics. The first are voltage- gated ion channels which open and close in response to membrane potential. These are then separated into sodium, calcium, potassium, proton, transient receptor, and cyclic nucleotide-gated channels; each of which is responsible for a unique role. Ligand-gated ion channels are also known as ionotropic receptors, and they open in response to specific ligand molecules binding to the extracellular domain of the receptor protein. The other gated classifications include activation and inactivation by second messengers, inward-rectifier potassium channels, calcium-activated potassium channels, two-pore-domain potassium channels, light-gated channels, mechano-sensitive ion channels and cyclic nucleotide-gated channels. Finally, the other classifications are based on less normal characteristics such as two-pore channels, and transient receptor potential channels. Slo2.2 is a novel member of the mammalian Slo potassium channel gene family. Slo2 channels may contribute to the resting potentials of cells that control their basal level of excitability. They also have sensors that couple channel activity

**Synonyms:**

bA100C15.2; FLJ41282; KCa4.1; KIAA1422; SLACK

**Note:**

Detects ~140kDa.

**Product images:**


Western blot analysis of Slo2.2 (SLACK) in rat brain membrane cell lysates using a 1:1000 dilution of the antibody