

Product datasheet for **TA326556**

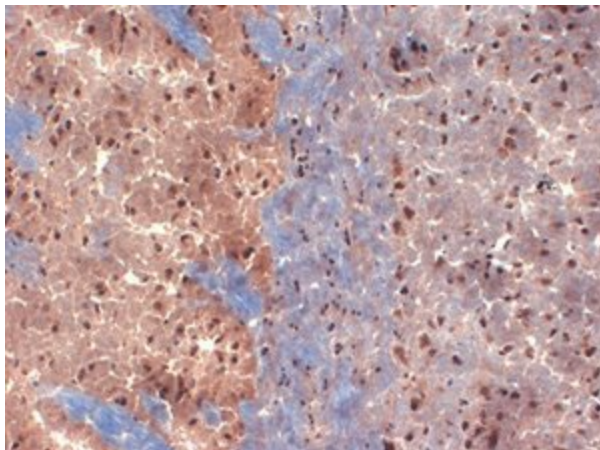
Kcnb2 Mouse Monoclonal Antibody [Clone ID: S37-89]

Product data:

Product Type:	Primary Antibodies
Clone Name:	S37-89
Applications:	IHC
Recommended Dilution:	WB: 1ug/ml, IHC: 0.1-1ug/ml, IF: 1-10ug/ml
Reactivity:	Mouse, Human, Rat
Host:	Mouse
Isotype:	IgG2a
Clonality:	Monoclonal
Immunogen:	Fusion protein amino acids 1-61 of rat kv2.2
Formulation:	PBS pH7.4, 50% glycerol
Concentration:	lot specific
Purification:	Protein G Purified
Conjugation:	Unconjugated
Storage:	Store at -20°C as received.
Stability:	Stable for 12 months from date of receipt.
Gene Name:	potassium voltage-gated channel subfamily B member 2
Database Link:	NP_446452 Entrez Gene 9312 Human Entrez Gene 98741 Mouse Entrez Gene 117105 Rat
Background:	Voltage gated channels are tetrameters composed of four alpha-subunits arranged around a central pore. Each alpha- subunit consists of six transmembrane segments with cytoplasmic NH2 and COOH-termini. Members of the KV1-KV4 subfamilies generate functional K ⁺ channels in a homotetrameric configuration. The KV2 subfamily consists of KV2.1 and KV2.2, and both have very similar properties. Members of the KV2 subfamily are widely expressed in neuronal tissues. They have also been reported in neurons in the dorsal root ganglia .
Synonyms:	KV2.2
Note:	Detects ~125kDa.



[View online »](#)

Product images:

IHC analysis of Kv2.2 in frozen sections of mouse brain extract using the antibody