

Product datasheet for **TA326553**

Kcnb1 Mouse Monoclonal Antibody [Clone ID: S4-11]

Product data:

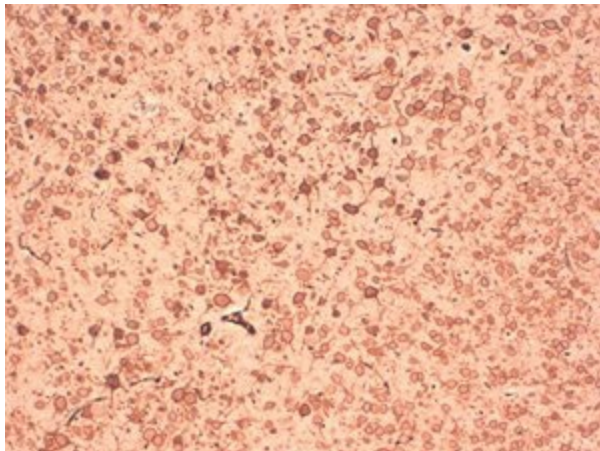
Product Type:	Primary Antibodies
Clone Name:	S4-11
Applications:	IHC
Recommended Dilution:	WB: 1ug/ml, IHC: 0.1-1ug/ml, IF: 1-10ug/ml
Reactivity:	Human, Mouse, Rat, Monkey
Host:	Mouse
Isotype:	IgG1
Clonality:	Monoclonal
Immunogen:	Bacterially expressed GST Bacterially expressed GSTfusion protein corresponding to amino acids 509-853 of rat KV2.1
Formulation:	PBS pH7.4, 50% glycerol
Concentration:	lot specific
Purification:	Protein G Purified
Conjugation:	Unconjugated
Storage:	Store at -20°C as received.
Stability:	Stable for 12 months from date of receipt.
Gene Name:	potassium voltage-gated channel subfamily B member 1
Database Link:	NP_037318 Entrez Gene 3745 HumanEntrez Gene 16500 MouseEntrez Gene 703520 MonkeyEntrez Gene 25736 Rat P15387
Background:	Voltage gated channels are tetrameters composed of four alpha-subunits arranged around a central pore. Each alphasubunit consists of six transmembrane segments with cytoplasmic NH2 and COOH-termini. Members of the KV1- KV4 subfamilies generate functional K ⁺ channels in a homotetrameric configuration. The KV2 subfamily consists of KV2.1 and KV2.2, and both have very similar properties. Members of the KV2 subfamily are widely expressed in neuronal tissues. They have also been reported in neurons in the dorsal root ganglia .
Synonyms:	DRK1; h-DRK1; Kv2.1



[View online »](#)

Note: Detects ~105-125kDa. Recognizes the Shab related α - subunit Kv2.1.

Product images:



IHC analysis of Kv2.1 tested on mouse brain hippocampus showing strong membrane staining of neurons, using a dilution of the antibody