

Product datasheet for **TA326547**

Itpr1 Mouse Monoclonal Antibody [Clone ID: S24-18]

Product data:

Product Type:	Primary Antibodies
Clone Name:	S24-18
Applications:	IHC, WB
Recommended Dilution:	WB: 1ug/ml, IHC: 0.1-1ug/ml, IF: 1-10ug/ml
Reactivity:	Human, Mouse, Rat
Host:	Mouse
Isotype:	IgG1
Clonality:	Monoclonal
Immunogen:	Fusion protein amino acids 2680-2749 (cytoplasmic carboxyl terminus) of rat type1 IP3R inositol 1,4,5-triphosphate receptor type 1, Itpr1
Formulation:	PBS pH7.4, 50% glycerol
Concentration:	lot specific
Purification:	Protein G Purified
Conjugation:	Unconjugated
Storage:	Store at -20°C as received.
Stability:	Stable for 12 months from date of receipt.
Gene Name:	inositol 1,4,5-trisphosphate receptor, type 1
Database Link:	NP_001007236 Entrez Gene 3708 Human Entrez Gene 16438 Mouse Entrez Gene 25262 Rat P29994



[View online »](#)

Background:

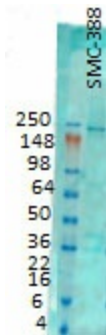
Inositol 1,4,5-triphosphate receptor, also known as IP3R or InsP3R, is a member of the intracellular calcium release channel family, and is located in the endoplasmic reticulum. It functions as a Ca²⁺ release channel for intracellular stores of calcium ions. There are three types of IP3 receptors (IP3 receptor 1, 2 and 3) that require the second messenger inositol 1,4,5-triphosphate (IP3) for activation. Four individual receptor subunits, resulting in homo- or heterooligomerization of the receptor isoform, form a functional channel. Phosphorylation of IP3R1 at Ser1756 by cyclic-AMP-dependent protein kinase A (PKA) regulates the sensitivity of IP3R1 to IP3 and may thus be a mode of regulation for Ca²⁺ release. IP3R1 mediated calcium release appears to have an effect on the induction of long term depression (LTD) in Purkinje cells.

Synonyms:

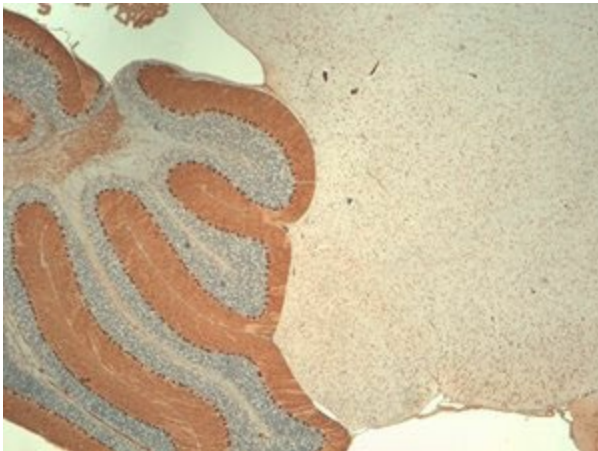
DKFZp313E1334; DKFZp313N1434; Insp3r1; IP3R; IP3R1; SCA15; SCA16

Note:

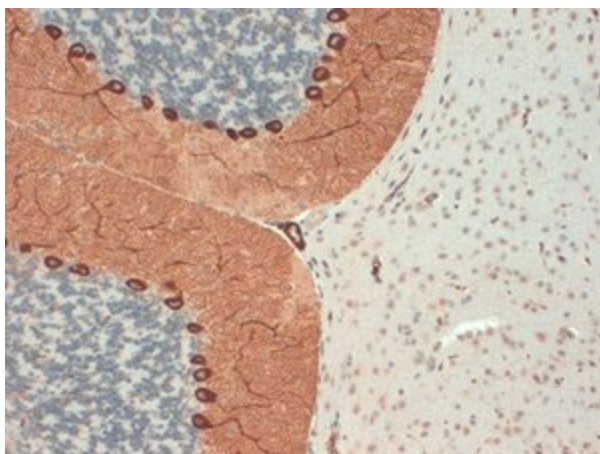
Detects ~300kDa. Does not recognize type 2 or type 3 IP3R's.

Product images:

Western blot analysis of IP3 Receptor on rat brain membrane tissues using a 1:1000 dilution of the antibody



IHC analysis of IP3 Receptor using the antibody



IHC analysis of IP3 Receptor using the antibody