

Product datasheet for **TA326526**

Dlg3 Mouse Monoclonal Antibody [Clone ID: S19-2]

Product data:

Product Type:	Primary Antibodies
Clone Name:	S19-2
Applications:	WB
Recommended Dilution:	WB: 1:1000 (ECL)
Reactivity:	Human, Mouse, Rat
Host:	Mouse
Isotype:	IgG1
Clonality:	Monoclonal
Immunogen:	Fusion protein amino acids 1-120 of rat SAP102
Formulation:	PBS pH7.4, 50% glycerol
Concentration:	lot specific
Purification:	Protein G Purified
Conjugation:	Unconjugated
Storage:	Store at -20°C as received.
Stability:	Stable for 12 months from date of receipt.
Gene Name:	discs large homolog 3
Database Link:	NP_113827 Entrez Gene 1741 Human Entrez Gene 53310 Mouse Entrez Gene 58948 Rat Q62936



[View online »](#)

Background:

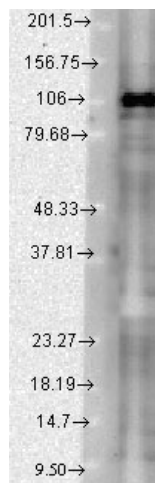
Synapse-associated protein 102 belongs to the membrane-associated guanylate kinase protein family and is a homolog of the Drosophila disc large tumor suppressor protein. SAP102 has extensive sequence homology to the PSD 95 family of proteins that facilitate ion channel clustering at synaptic terminal . SAP102 consists of three 90 amino acids PDZ domains at its amino terminus, a Src homology 3 domain and a guanylate kinase domain . All three PDZ domains of SAP102 participate in binding to the NMDA receptor, interacting specifically with the carboxy-terminal domain of the N-methyl-D-aspartate receptor 2B (NR2B). The interaction may facilitate AMPA receptor withdrawal from the postsynaptic membrane by inhibiting the ERK/MAPK pathway . SAP102 also interacts with synaptic ras-GTPase activating protein synGAP through its PDZ domains . In general, the SAP102 protein is more highly expressed in non-proliferating cells than in proliferating cells, indicating a role in the negative regulation of cell growth.

Synonyms:

KIAA1232; MRX; MRX90; NE-Dlg; NEDLG; neuroendocrine-DLG; SAP-102; SAP102; XLMR

Note:

Detects ~105kDa. No cross-reactivity against PSD95, SAP97 or Chapsyn-110.

Product images:

Western blot analysis of SAP102 in rat brain extract using a dilution of 1:1000 of the antibody