

Product datasheet for **TA326522**

Cask Mouse Monoclonal Antibody [Clone ID: S56A-50]

Product data:

Product Type:	Primary Antibodies
Clone Name:	S56A-50
Applications:	IHC, WB
Recommended Dilution:	WB: 1:1000
Reactivity:	Mouse, Rat, Human, Zebrafish, Xenopus
Host:	Mouse
Isotype:	IgG1
Clonality:	Monoclonal
Immunogen:	Fusion protein amino acids 318-415 of rat CASK/Lin2
Formulation:	PBS pH7.4, 50% glycerol
Concentration:	lot specific
Purification:	Protein G Purified
Conjugation:	Unconjugated
Storage:	Store at -20°C as received.
Stability:	Stable for 12 months from date of receipt.
Gene Name:	calcium/calmodulin-dependent serine protein kinase (MAGUK family)
Database Link:	NP_071520 Entrez Gene 8573 Human Entrez Gene 12361 Mouse Entrez Gene 29647 Rat Q62915



[View online »](#)

Background:

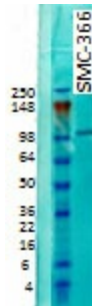
CASK (calmodulin sensitive kinase) is a ~112kDa member of the membrane associated quanylate kinase (MAGUK) protein family. It is an adaptor protein with a calcium/calmodulin-dependent protein kinase domain, a SH3 domain, aguanilate kinase homology domain (GUK) and a PDZ domain. CASK links transmembrane proteins to the cytoskeleton and signaling molecules. In particular, CASK binds to Neurexin to stabilize pre- and post-synaptic structures . While most of CASK proteins are cytoplasmic, a portion of the protein enters the nucleus, where it acts as a transcriptional co-activator . Manifesting the importance of CASK, transgenic mice with insertional mutations die within 24 hours of births . CASK is also localized in the nuclei of basal keratinocytes in newborn rodent skin and developing hair follicles. It may play a role in wound healing .

Synonyms:

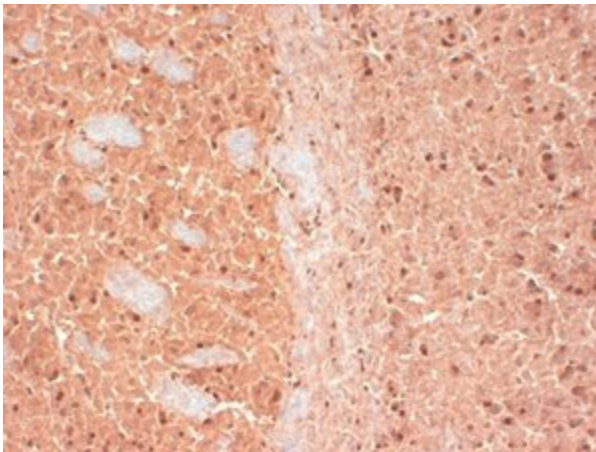
CAGH39; CMG; FGS4; FLJ22219; FLJ31914; hCASK; LIN2; MICPCH; TNRC8

Note:

Detects ~100kDa.

Product images:

Western blot analysis on rat brain membrane tissues using a 1:1000 dilution of the antibody



IHC analysis of CASK in frozen sections of mouse brain extract using the antibody