

Product datasheet for **TA326513**

Aqp4 Rabbit Polyclonal Antibody

Product data:

Product Type:	Primary Antibodies
Applications:	IF, WB
Recommended Dilution:	WB 1:1000-4000, IF: 1:400
Reactivity:	Human, Mouse, Rat
Host:	Rabbit
Clonality:	Polyclonal
Immunogen:	C-terminal peptide
Formulation:	PBS pH7.4, 50% glycerol and 0.09% sodium azide
Concentration:	lot specific
Purification:	Affinity Purified
Conjugation:	Unconjugated
Storage:	Store at -20°C as received.
Stability:	Stable for 12 months from date of receipt.
Gene Name:	aquaporin 4
Database Link:	NP_036957 Entrez Gene 361 Human Entrez Gene 11829 Mouse Entrez Gene 25293 Rat P47863

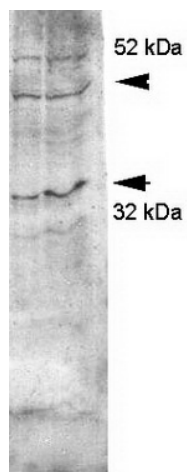
Background: Aquaporins selectively conduct water molecules in and out of the cell, while preventing the passage of ions and other solutes. Known as water channels, they are integral membrane pore proteins. Aquaporin 4 is constitutively expressed in the basolateral cell membrane of principal collecting duct cells in the kidney and provide a pathway for water to exit these cells. It is also expressed in astrocytes and is upregulated by direct insult to the CNS. Aquaporin 4 has been proposed as the primary autoimmune target in neuromyelitis optica.

Synonyms: AQP-4; aquaporin-4; HMIWC2; MGC22454; MIWC; WCH4

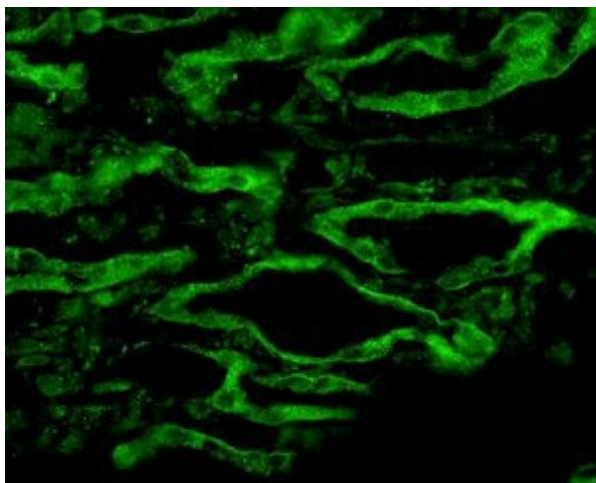
Note: Detects ~35kDa. May detect larger glycosylated bands ~50kDa.



[View online »](#)

Product images:

Western blot analysis of Aquaporin 4 in rat kidney lysates using a 1:2000 dilution of the antibody



IF analysis of Aquaporin 4 in rat kidney tissue using a 1:200 dilution of the antibody