

Product datasheet for **TA326510**

Aqp1 Rabbit Polyclonal Antibody

Product data:

Product Type:	Primary Antibodies
Applications:	IF, WB
Recommended Dilution:	WB 1:1000-4000, IF: 1:200-400
Reactivity:	Human, Mouse, Rat
Host:	Rabbit
Clonality:	Polyclonal
Immunogen:	N-terminal peptide
Formulation:	PBS pH7.4, 50% glycerol and 0.09% sodium azide
Concentration:	lot specific
Purification:	Affinity Purified
Conjugation:	Unconjugated
Storage:	Store at -20°C as received.
Stability:	Stable for 12 months from date of receipt.
Gene Name:	aquaporin 1
Database Link:	NP_036910 Entrez Gene 358 Human Entrez Gene 11826 Mouse Entrez Gene 25240 Rat P29975

Background: Aquaporins selectively conduct water molecules in and out of the cell, while preventing the passage of ions and other solutes. Known as water channels, they are integral membrane pore proteins. Aquaporin 1 is a widely expressed water channel, found in the basolateral and apical plasma membranes of the proximal tubules, the descending loop of Henle and in the descending portion of the vasa recta. Additionally it is found in red blood cells, vascular endothelium, gastrointestinal tract, sweat glands and lungs. It is not regulated by vasopressin.

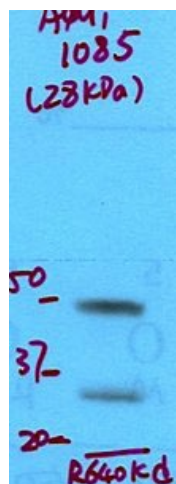
Synonyms: AQP-1; AQP-CHIP; Aquaporin-CHIP; CHIP28; CO; MGC26324

Note: Detects ~28.5kDa. May detect larger glycosylated bands ~35-50kDa.

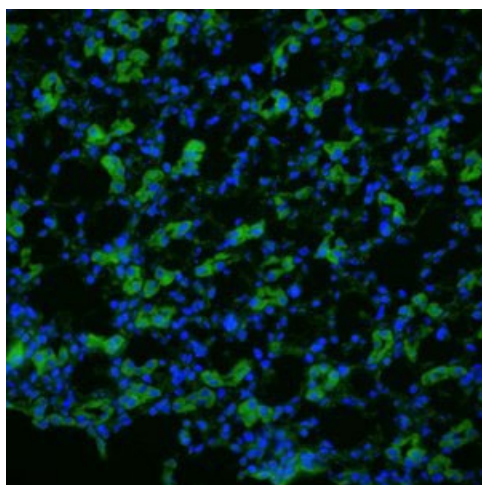


[View online »](#)

Product images:



Western blot analysis of Aquaporin 1 in rat kidney tissue using a 1 in 2000 dilution of the antibody



IF analysis of Aquaporin 1 in rat kidney tissue using a 1 in 200 dilution of the antibody