

Product datasheet for **TA326496**

Noelin (OLFM1) Mouse Monoclonal Antibody [Clone ID: S96-7]

Product data:

Product Type:	Primary Antibodies
Clone Name:	S96-7
Applications:	IHC
Recommended Dilution:	WB: 1ug/ml, IHC: 0.1-1ug/ml, IF: 1-10ug/ml
Reactivity:	Human, Mouse, Rat
Host:	Mouse
Isotype:	IgG1
Clonality:	Monoclonal
Immunogen:	Synthetic peptide of amino acids 28-48 of human pancortin-1 (SLVGLNTRLAASGGTLDRS)
Formulation:	PBS pH7.4, 50% glycerol, 0.09% sodium azide
Concentration:	lot specific
Purification:	Protein G Purified
Conjugation:	Unconjugated
Storage:	Store at -20°C as received.
Stability:	Stable for 12 months from date of receipt.
Gene Name:	olfactomedin 1
Database Link:	NP_055094 Entrez Gene 56177 Mouse Entrez Gene 93667 Rat Entrez Gene 10439 Human Q99784

Background: Pancortin, a member of a diverse family of secreted glycoproteins, is implicated in the development of the nervous system, and the glaucoma-associated protein myocilin . Studies suggest that Pancortin-2 interact with WAVE1 in a novel cell death cascade in adult, but not embryonic, cerebral cortical neurons. Specifically pancortin-2 is a mediator of ischemia-induced apoptosis of neurons in the adult cerebral cortex, and functions in a novel mitochondrial/actin associated protein complex that sequesters Bcl-xL . It is also involved in the generation of neural crest cells, and in neurogenesis .

Synonyms: AMY; NOE1; NOELIN1; Olfa

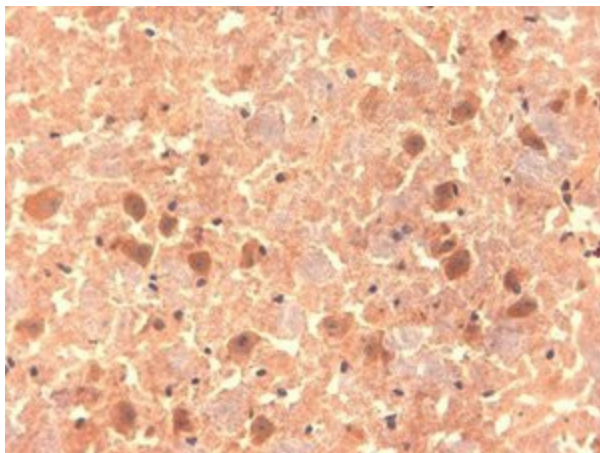


[View online »](#)

Note: Detects ~70kDa (Pancortin-1, Pancortin-3) and ~20kDa (Pancortin-2 and Pancortin-4).

Protein Families: Druggable Genome

Product images:



IHC analysis of Pancortin in frozen sections of mouse brain extract using the antibody