

Product datasheet for **TA326489**

KCNMB4 Mouse Monoclonal Antibody [Clone ID: S18A-3]

Product data:

Product Type:	Primary Antibodies
Clone Name:	S18A-3
Applications:	IHC
Recommended Dilution:	WB: 1ug/ml, IHC: 0.1-1ug/ml, IF: 1-10ug/ml
Reactivity:	Human, Mouse, Rat
Host:	Mouse
Isotype:	IgG2a
Clonality:	Monoclonal
Immunogen:	Fusion protein amino acids 45-167 (entire extracellular domain) of mouse BKBeta4
Formulation:	PBS pH7.4, 50% glycerol, 0.09% sodium azide
Concentration:	lot specific
Purification:	Protein G Purified
Conjugation:	Unconjugated
Storage:	Store at -20°C as received.
Stability:	Stable for 12 months from date of receipt.
Gene Name:	potassium calcium-activated channel subfamily M regulatory beta subunit 4
Database Link:	NP_055320 Entrez Gene 58802 MouseEntrez Gene 66016 RatEntrez Gene 27345 Human Q86W47
Background:	BK channels contribute to electrical impulses, proper signal transmission of information and regulation of neurotransmitter release . A gain of function mutation in the pore-forming alpha subunit of the BK channel was linked to human neurological diseases. Findings suggest that the distribution of the beta subunits in the brain can modulate the BK channels to contribute to the pathophysiology of epilepsy and dyskinesia . This has major implications on other physiological processes in tissues other than the brain.
Synonyms:	beta member 4; calcium-activated potassium channel beta 4 subunit; large conductance calcium-dependent potassium ion channel beta 4 subunit; potassium large conductance calcium-activated channel; subfamily M



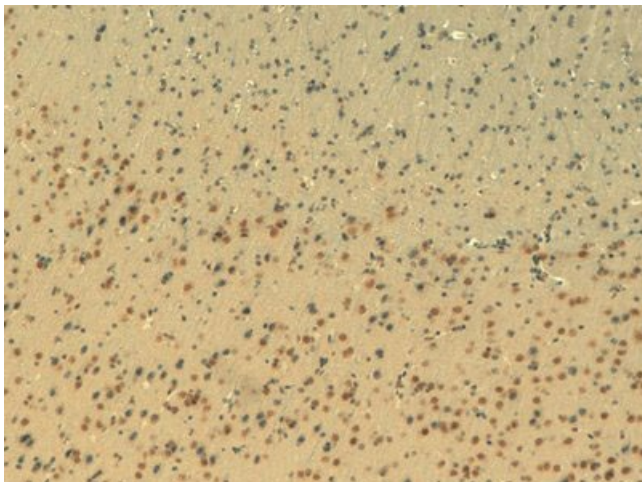
[View online »](#)

Note: Detects ~24kDa.

Protein Families: Druggable Genome, Ion Channels: Other, Transmembrane

Protein Pathways: Vascular smooth muscle contraction

Product images:



IHC of BK Beta4 in brain tissues using a dilution of the antibody