

Product datasheet for **TA326488**

KCNMB2 Mouse Monoclonal Antibody [Clone ID: S53-32]

Product data:

Product Type:	Primary Antibodies
Clone Name:	S53-32
Applications:	WB
Recommended Dilution:	WB: 1-10ug/ml, IHC: 0.1-1.0ug/ml, IF: 1.0-10ug/ml
Reactivity:	Human, Mouse, Rat
Host:	Mouse
Isotype:	IgG1
Clonality:	Monoclonal
Immunogen:	Fusion protein amino acids 1-41 (N-terminus) and 218-235 (C-terminus) of mouse BKBeta2 (
Formulation:	PBS pH7.4, 50% glycerol, 0.09% sodium azide
Concentration:	lot specific
Purification:	Protein G Purified
Conjugation:	Unconjugated
Storage:	Store at -20°C as received.
Stability:	Stable for 12 months from date of receipt.
Gene Name:	potassium calcium-activated channel subfamily M regulatory beta subunit 2
Database Link:	NP_852006 Entrez Gene 72413 MouseEntrez Gene 294961 RatEntrez Gene 10242 Human Q9Y691
Background:	BK channels contribute to electrical impulses, proper signal transmission of information and regulation of neurotransmitter release . A gain of function mutation in the pore-forming alpha subunit of the BK channel was linked to human neurological diseases. Findings suggest that the distribution of the beta subunits in the brain can modulate the BK channels to contribute to the pathophysiology of epilepsy and dyskinesia . This has major implications on other physiological processes in tissues other than the brain.
Synonyms:	MGC22431



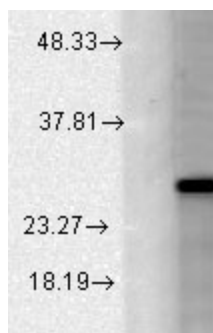
[View online »](#)

Note: Detects endogenous and exogenous hsp22 in monomeric, dimeric and tetrameric forms in WB. Does not cross react with alpha crystallin.

Protein Families: Druggable Genome, Ion Channels: Other, Transmembrane

Protein Pathways: Vascular smooth muscle contraction

Product images:



Western blot analysis of BK Beta2 in a human cell line mix using a 1:1000 dilution of the antibody