

## Product datasheet for **TA326483**

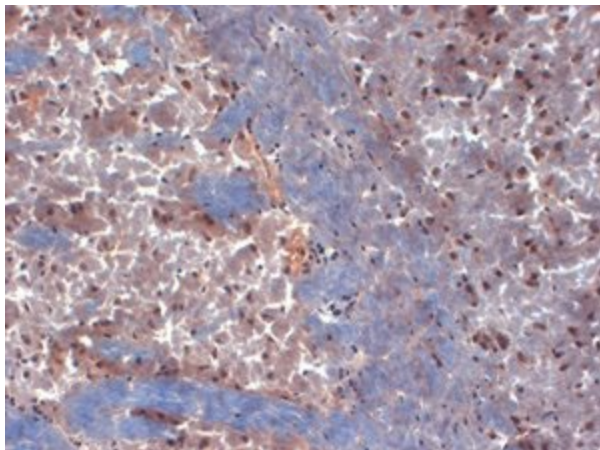
### **Kv1.6 (KCNA6) Mouse Monoclonal Antibody [Clone ID: S19-36]**

#### **Product data:**

Product Type:	Primary Antibodies
Clone Name:	S19-36
Applications:	IHC
Recommended Dilution:	WB: 1ug/ml, IHC: 0.1-1ug/ml, IF: 1-10ug/ml
Reactivity:	Human, Mouse, Rat
Host:	Mouse
Isotype:	IgG3
Clonality:	Monoclonal
Immunogen:	Synthetic peptide 507-525 (RERRSSYLPTPHRAYAEKR, cytoplasmic C-terminus) of rat Kv1.6
Formulation:	PBS pH7.4, 50% glycerol, 0.09% sodium azide
Concentration:	lot specific
Purification:	PEG Purified
Conjugation:	Unconjugated
Storage:	Store at -20°C as received.
Stability:	Stable for 12 months from date of receipt.
Gene Name:	potassium voltage-gated channel subfamily A member 6
Database Link:	<a href="#">NP_002226</a> <a href="#">Entrez Gene 16494 MouseEntrez Gene 64358 RatEntrez Gene 3742 Human P17658</a>
Background:	Voltage gated channels are tetrameters composed of four subunit consists of six transmembrane segments with cytoplasmic NH2 and COOH-termini. Members of the KV1-4 subfamilies generate functional K <sup>+</sup> channels in a homotetrameric configuration .
Synonyms:	HBK2; KV1.6; PPP1R96
Note:	Detects ~60kDa. Does not cross react with other Kv1 channels
Protein Families:	Druggable Genome, Ion Channels: Potassium, Transmembrane



[View online »](#)

**Product images:**

IHC analysis of Kv1.6 in frozen sections of mouse brain extract using the antibody