

Product datasheet for **TA326481**

ING1 Rabbit Polyclonal Antibody

Product data:

Product Type:	Primary Antibodies
Applications:	WB
Recommended Dilution:	WB: 1ug/ml
Reactivity:	Mouse, Human
Host:	Rabbit
Clonality:	Polyclonal
Immunogen:	Mouse p33 ING1 N-terminal peptide -KLH conjugates
Formulation:	TBS, 50% glycerol, 0.09% sodium azide
Concentration:	lot specific
Purification:	Affinity Purified
Conjugation:	Unconjugated
Storage:	Store at -20°C as received.
Stability:	Stable for 12 months from date of receipt.
Gene Name:	inhibitor of growth family member 1
Database Link:	NP_937862 Entrez Gene 26356 Mouse Entrez Gene 3621 Human Q9UK53

Background: The p33ING1 protein encodes a 33-kD, 294-amino acid protein that displays the characteristics of a tumor suppressor gene. The p33ING1 protein is a regulator of cell cycle, senescence, and apoptosis. It can mediate growth arrest, anchor dependent growth and influence chemosensitivity . It also has a proposed role as a growth regulator, which is consistent with its location in the nucleus . It has been demonstrated that the ING1 gene has three exons and that four mRNA variants are transcribed from three different promoter regions (p33 ING1, p24 ING1, p27 ING1, p47 IG1) . ING1 can possibly influence the above biological functions depending on which variant is expressed .

Synonyms: p24ING1c; p33; p33ING1; p33ING1b; p47; p47ING1a

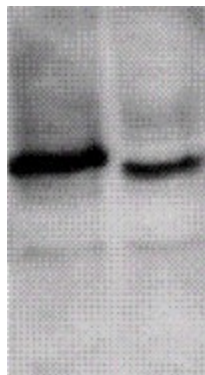
Note: Detects a ~33kDa protein corresponding to the molecular mass of p33 ING1 on SDS PAGE immunoblots.



[View online »](#)

Protein Families: Druggable Genome, Transcription Factors

Product images:



Western blot analysis of p33 ING1 in mouse brain extract using the antibody