

## Product datasheet for **TA326473**

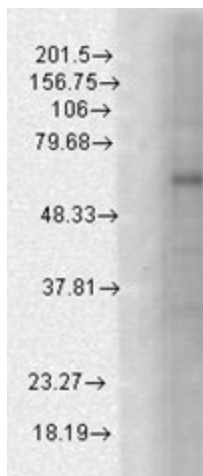
### **GABA A Receptor beta 1 (GABRB1) Mouse Monoclonal Antibody [Clone ID: S96-55]**

#### **Product data:**

<b>Product Type:</b>	Primary Antibodies
<b>Clone Name:</b>	S96-55
<b>Applications:</b>	WB
<b>Recommended Dilution:</b>	WB: 1-10ug/ml, IHC: 0.1-1.0ug/ml, IF: 1.0-10ug/ml
<b>Reactivity:</b>	Mouse, Human, Rat
<b>Host:</b>	Mouse
<b>Isotype:</b>	IgG1
<b>Clonality:</b>	Monoclonal
<b>Immunogen:</b>	Fusion protein amino acids 327-450 of mouse GABA-A-R-Beta1
<b>Formulation:</b>	PBS pH7.4, 50% glycerol, 0.09% sodium azide
<b>Concentration:</b>	lot specific
<b>Purification:</b>	Protein G Purified
<b>Conjugation:</b>	Unconjugated
<b>Storage:</b>	Store at -20°C as received.
<b>Stability:</b>	Stable for 12 months from date of receipt.
<b>Gene Name:</b>	gamma-aminobutyric acid type A receptor beta1 subunit
<b>Database Link:</b>	<a href="#">NP_000803</a> <a href="#">Entrez Gene 14400 Mouse</a> <a href="#">Entrez Gene 25450 Rat</a> <a href="#">Entrez Gene 2560 Human</a> <a href="#">P18505</a>
<b>Background:</b>	The GABA-A receptor is a member of the superfamily of fast acting ligand-gated ion channels. The individual subunits of these receptors have similar sequences and structural features . GABA-A receptors are the major fast inhibitory neurotransmitter gated ion channels in the brain .
<b>Synonyms:</b>	beta 1; gamma-aminobutyric acid (GABA) A receptor
<b>Note:</b>	Detects ~55kDa. No cross-reactivity against GABA-A-R-Beta 2 or -Beta3.
<b>Protein Families:</b>	Druggable Genome, Ion Channels: Cys-loop Receptors, Transmembrane
<b>Protein Pathways:</b>	Neuroactive ligand-receptor interaction



[View online »](#)

**Product images:**

Western blot analysis of GABA(A)R, Beta1 in a human cell line mix using a 1:1000 dilution of the antibody