

Product datasheet for **TA326472**

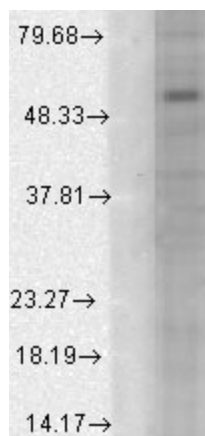
GABA A Receptor alpha 1 (GABRA1) Mouse Monoclonal Antibody [Clone ID: S95-35]

Product data:

Product Type:	Primary Antibodies
Clone Name:	S95-35
Applications:	WB
Recommended Dilution:	WB: 1-10ug/ml, IHC: 0.1-1.0ug/ml, IF: 1.0-10ug/ml
Reactivity:	Mouse, Human, Rat
Host:	Mouse
Isotype:	IgG2a
Clonality:	Monoclonal
Immunogen:	Fusion protein amino acids 355-394 of mouse GABA-A-R-Alpha1
Formulation:	PBS pH7.4, 50% glycerol, 0.09% sodium azide
Concentration:	lot specific
Purification:	Protein G Purified
Conjugation:	Unconjugated
Storage:	Store at -20°C as received.
Stability:	Stable for 12 months from date of receipt.
Gene Name:	gamma-aminobutyric acid type A receptor alpha1 subunit
Database Link:	NP_000797 Entrez Gene 14394 Mouse Entrez Gene 29705 Rat Entrez Gene 2554 Human P14867
Background:	The GABA-A receptor is a member of the superfamily of fast acting ligand-gated ion channels. The individual subunits of these receptors have similar sequences and structural features . GABA-A receptors are the major fast inhibitory neurotransmitter gated ion channels in the brain .
Synonyms:	ECA4; EIEE19; EJM; EJM5
Note:	Detects ~55kDa. No cross-reactivity against GABA-A-R-Alpha 2 or -Alpha3.
Protein Families:	Druggable Genome, Ion Channels: Cys-loop Receptors, Transmembrane
Protein Pathways:	Neuroactive ligand-receptor interaction



[View online »](#)

Product images:

Western blot analysis of GABA(A)R, Delta in a human cell line mix using a 1:1000 dilution of the antibody