

Product datasheet for **TA326466**

AHA1 (AHSA1) Rabbit Polyclonal Antibody

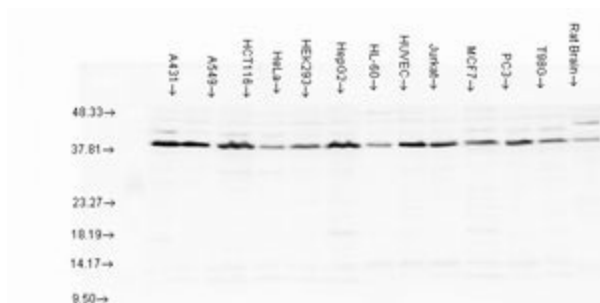
Product data:

Product Type:	Primary Antibodies
Applications:	WB
Recommended Dilution:	WB: 1:1000
Reactivity:	Human, Mouse, Rat
Host:	Rabbit
Clonality:	Polyclonal
Immunogen:	Mouse Aha1
Formulation:	PBS pH7.4, 50% glycerol, 0.09% sodium azide
Concentration:	lot specific
Purification:	Protein A Purified
Conjugation:	Unconjugated
Storage:	Store at -20°C as received.
Stability:	Stable for 12 months from date of receipt.
Gene Name:	activator of Hsp90 ATPase activity 1
Database Link:	NP_036243 Entrez Gene 217737 Mouse Entrez Gene 681996 Rat Entrez Gene 10598 Human O95433
Background:	Aha1 is a member of the Hsp90 cochaperone family, and is thought to stimulate Hsp90 ATPase activity by competing with p23 and other co-chaperones for Hsp90 binding . It may affect a step in the endoplasmic reticulum to Golgi trafficking. Aha1 also interacts with HSPCA/Hsp90 and with the cytoplasmic tail of the vesicular stomatitis virus glycoproteins (VSV G) . Aha1 is expressed in numerous tissues, including the brain, heart, skeletal muscle, and kidney, and at low levels, the liver and placenta. Aha1 might be a potential therapeutic strategy to increase sensitivity to HSP inhibitors .
Synonyms:	AHA1; C14orf3; p38
Note:	Detects ~ 38kDa.



[View online »](#)

Product images:



Western blot analysis of Aha1 in a rat tissue mix using a 1:1000 dilution of the antibody