

Product datasheet for **TA326465**

AHA1 (AHSA1) Rat Monoclonal Antibody [Clone ID: 25F2.D10]

Product data:

Product Type:	Primary Antibodies
Clone Name:	25F2.D10
Applications:	IF, IP, WB
Recommended Dilution:	WB: 1:1000
Reactivity:	Human, Mouse, Rat
Host:	Rat
Isotype:	IgG2a, kappa
Clonality:	Monoclonal
Immunogen:	Mouse Aha1
Formulation:	0.02M potassium phosphate, 0.15M sodium chloride, pH7.2
Concentration:	lot specific
Purification:	Protein G Purified
Conjugation:	Unconjugated
Storage:	Store at -20°C as received.
Stability:	Stable for 12 months from date of receipt.
Gene Name:	activator of Hsp90 ATPase activity 1
Database Link:	NP_036243 Entrez Gene 217737 MouseEntrez Gene 681996 RatEntrez Gene 10598 Human O95433

Background: Aha1 is a member of the Hsp90 cochaperone family, and is thought to stimulate Hsp90 ATPase activity by competing with p23 and other co-chaperones for Hsp90 binding . It may affect a step in the endoplasmic reticulum to Golgi trafficking. Aha1 also interacts with HSPCA/Hsp90 and with the cytoplasmic tail of the vesicular stomatitis virus glycoproteins (VSV G) . Aha1 is expressed in numerous tissues, including the brain, heart, skeletal muscle, and kidney, and at low levels, the liver and placenta. Aha1 might be a potential therapeutic strategy to increase sensitivity to HSP inhibitors .

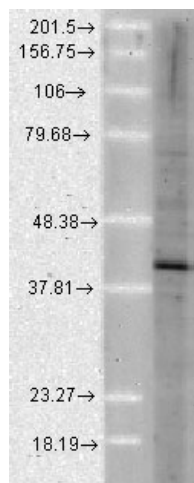
Synonyms: AHA1; C14orf3; p38



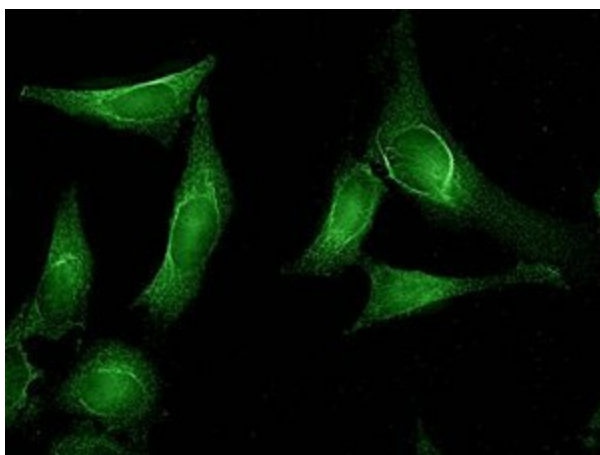
[View online »](#)

Note: Detects ~38kDa. Can run up to 45kDa on SDS Page

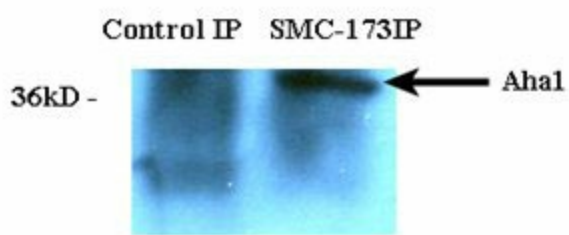
Product images:



Western blot analysis of Aha1 in a human cell line mix, using a 1:1000 dilution of the antibody



IF of Aha1 tested on HeLa cell lysates.



IP of Aha1 tested on HeLa cell lysates.