

Product datasheet for **TA326432**

HSPB2 Rabbit Polyclonal Antibody [Clone ID: N/A]

Product data:

Product Type:	Primary Antibodies
Clone Name:	N/A
Applications:	WB
Recommended Dilution:	WB: 1:1000
Reactivity:	Human, Mouse, Rat
Host:	Rabbit
Clonality:	Polyclonal
Immunogen:	Synthetic peptide
Formulation:	PBS, 50% glycerol, 0.02% sodium azide
Concentration:	lot specific
Purification:	Affinity Purified
Conjugation:	Unconjugated
Storage:	Store at -20°C as received.
Stability:	Stable for 12 months from date of receipt.
Gene Name:	heat shock protein family B (small) member 2
Database Link:	NP_001532 Entrez Gene 69253 Mouse Entrez Gene 161476 Rat Entrez Gene 3316 Human Q16082



[View online »](#)

Background:

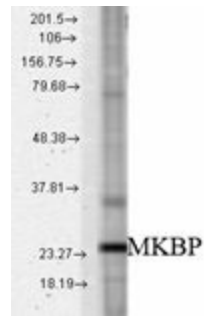
HSPB2, also known as MKBP is the most divergent member of the sHSP family with only 30% sequence identity to all other mammalian sHSPs . MKBP is known to associate specifically with myotonic dystrophy protein kinase (DMPK) in skeletal muscle. MKBP enhances the kinase activity of DMPK and protects it from heat-induced activation. MKBP also shows a unique nature compared to other sHSPs, in that the expression of MKBP is not induced by heat shock . In unstressed skeletal muscle, MKBP forms large oligomeric complexes with HSPB3 in the cytosol which are localized on mitochondria and the neuromuscular junction . During stress, these complexes dissolve and MKBPs localization to mitochondria increases, leading to increased cell survival. Pinz et al. tried to find a distinct role for MKBP in terms of cardiac mechanics and finds that it is required for normal systolic performance and normal cardiac energetic . HSPB2 has also been found to be expressed in several cancer cell lines, including human breast cancer, suggesting that MKBP may be an important factor in tumor transformation and metastasis .

Synonyms:

Hs.78846; HSP27; LOH11CR1K; MKBP

Note:

Detects ~27kDa

Product images:

Western blot analysis of MKBP in a rat tissue mix using a 1:1000 dilution of the antibody