

## Product datasheet for TA326425

### Cpn10 (HSPE1) Rabbit Polyclonal Antibody [Clone ID: N/A]

#### Product data:

Product Type:	Primary Antibodies
Clone Name:	N/A
Applications:	IHC, WB
Recommended Dilution:	WB: 1:1000
Reactivity:	Human, Mouse, Rat, Bovine, Canine, Guinea Pig, Pig, Rabbit, Sheep, Xenopus
Host:	Rabbit
Clonality:	Polyclonal
Immunogen:	Human Cpn10 peptide AA 91-101
Formulation:	PBS pH 7.3, 0.02% sodium azide
Concentration:	lot specific
Purification:	Protein A Purified
Conjugation:	Unconjugated
Storage:	Store at -20°C as received.
Stability:	Stable for 12 months from date of receipt.
Gene Name:	heat shock protein family E (Hsp10) member 1
Database Link:	<a href="#">NP_002148</a> <a href="#">Entrez Gene 15528 Mouse</a> <a href="#">Entrez Gene 25462 Rat</a> <a href="#">Entrez Gene 3336 Human</a> <a href="#">P61604</a>

**Background:** Chaperonin 10, otherwise known as Cpn10, (groES in E.coli) make up a family of small heat shock proteins with an approximate molecular mass of 10kDa (Hsp10s). Cpn10 acts as a co-chaperone and interacts with the Hsp60 family to promote proper folding of polypeptides. Cpn10 and Cpn60 both exhibit sevenfold axis of symmetry and function as a team in the protein folding and assembly process. Cpn10 has been located in human platelets, but is also present in human maternal serum. It has been reported that human Cpn10 is identical with early pregnancy factor, which is involved in control over cell growth and development. This identification suggest that Cpn10 may act like a hormone in stressful situations such as pregnancy.

**Synonyms:** CPN10; EPF; GROES; HSP10

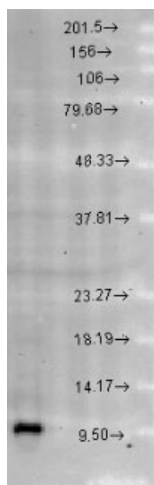


[View online »](#)

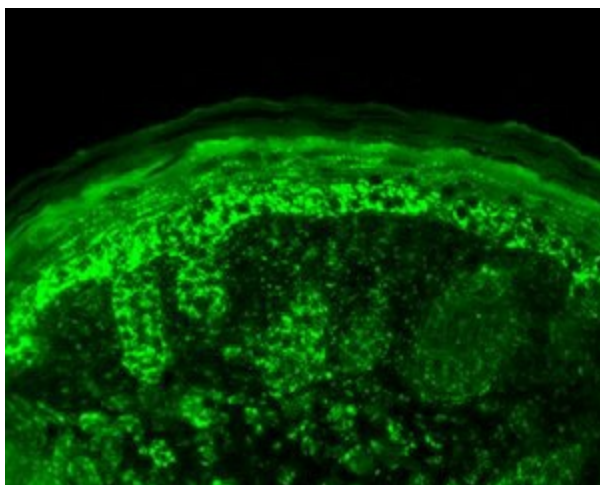
**Note:** Detects ~ 10kDa.

**Protein Families:** Druggable Genome, Stem cell - Pluripotency

**Product images:**



Western blot analysis of Cpn10 in rat brain extract using a 1:1000 dilution of the antibody



IHC analysis of Cpn10 using the antibody