

Product datasheet for **TA326413**

Bim (BCL2L11) Rabbit Polyclonal Antibody [Clone ID: N/A]

Product data:

Product Type:	Primary Antibodies
Clone Name:	N/A
Applications:	IF, WB
Recommended Dilution:	WB: 1:400, ICC: 1:100
Reactivity:	Human, Mouse, Rat
Host:	Rabbit
Clonality:	Polyclonal
Immunogen:	Internal central amino acids of human Bim
Formulation:	PBS with 0.02% sodium azide
Concentration:	lot specific
Purification:	Affinity Purified
Conjugation:	Unconjugated
Storage:	Store at -20°C as received.
Stability:	Stable for 12 months from date of receipt.
Gene Name:	BCL2 like 11
Database Link:	NP_006529 Entrez Gene 12125 Mouse Entrez Gene 64547 Rat Entrez Gene 10018 Human O43521

Background: Members in the Bcl-2 family are critical regulators of apoptosis by either inhibiting or promoting cell death. Bim/BOD is a group of three splice variants, BimEL, BimL and BimS, with apparent molecular masses of ~23, 16, and 13 kDa, respectively. Bcl-2 homology 3 (BH3) domain is a potent death domain. BH3 domain containing pro-apoptotic proteins, including Bad, Bax, Bid, Bik, and Hrk, form a growing subclass of the Bcl-2 family. A novel BH3 domain containing protein was recently identified and designated Bim or BOD in human, mouse and rat. Bim/BOD interacts with diverse members in the pro-survival Bcl-2 sub-family including Bcl-2, Bcl-xL and Bcl-w. Bim/BOD induces apoptosis. The messenger RNA of Bim is ubiquitously expressed in multiple tissues and cell lines.

Synonyms: BAM; BIM; BOD

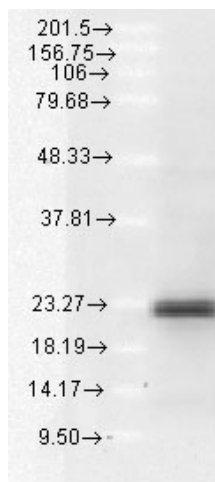


[View online »](#)

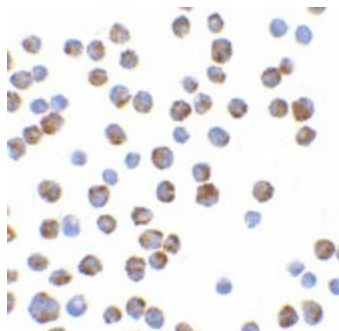
Note: Detects a 23kDa protein corresponding to the molecular mass of Bim on SDS PAGE immunoblots.

Protein Families: Druggable Genome

Product images:



Western blot analysis of Bim Bod in A549 cell lysates using 10ug of the antibody



ICC of Bim in K562 cells using the antibody