

## Product datasheet for **TA326411**

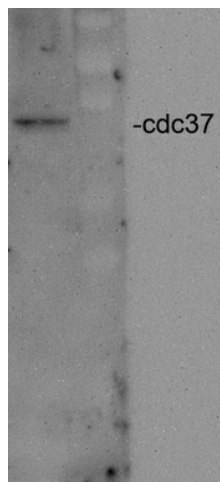
### CDC37 Rabbit Polyclonal Antibody [Clone ID: N/A]

#### Product data:

Product Type:	Primary Antibodies
Clone Name:	N/A
Applications:	WB
Reactivity:	Human
Host:	Rabbit
Clonality:	Polyclonal
Immunogen:	Native human Cdc37, full length
Formulation:	PBS pH7.4, 50% glycerol, 0.09% sodium azide
Concentration:	lot specific
Purification:	Protein A Purified
Conjugation:	Unconjugated
Storage:	Store at -20°C as received.
Stability:	Stable for 12 months from date of receipt.
Gene Name:	cell division cycle 37
Database Link:	<a href="#">NP_008996</a> <a href="#">Entrez Gene 11140 Human</a> <a href="#">Q16543</a>
Background:	Hsp90 co-chaperone Cdc37 is a protein that is encoded by the CDC37 gene. It has been found to form complexes with Hsp90 and a variety of protein kinases including CDK4, CDK6, SRC, RAF1, MOK and eIF-2 alpha kinases. It is thought to play a critical role in directing Hsp90 to its target kinases .CDC37 is necessary for maintaining prostate tumor cell growth and represents a novel target in the exploration for multi-targeted therapies .
Synonyms:	P50CDC37
Note:	Detects ~44.5kDa.



[View online »](#)

**Product images:**

Western blot analysis of Cdc37 in HeLa cell lysates using a 1:2000 dilution of the antibody