

Product datasheet for **TA326406**

SNAP25 Mouse Monoclonal Antibody [Clone ID: SP-12]

Product data:

Product Type:	Primary Antibodies
Clone Name:	SP-12
Applications:	WB
Recommended Dilution:	WB: 1:1000, ICC/IF: 1:1000, ELISA: 1:5000
Reactivity:	Human, Mouse, Rat, Feline, Pig
Host:	Mouse
Isotype:	IgG1
Clonality:	Monoclonal
Immunogen:	Raised against a crude synaptic preparation from the post mortem human brain
Formulation:	PBS pH7.4, 50% glycerol, 0.09% sodium azide
Concentration:	lot specific
Purification:	Protein G Purified
Conjugation:	Unconjugated
Storage:	Store at -20°C as received.
Stability:	Stable for 12 months from date of receipt.
Gene Name:	synaptosome associated protein 25kDa
Database Link:	NP_570824 Entrez Gene 20614 Mouse Entrez Gene 25012 Rat Entrez Gene 6616 Human P60880

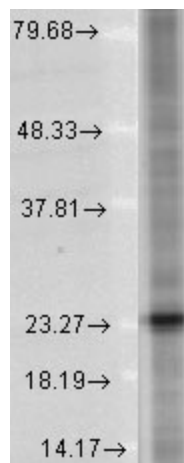
Background: Synaptosomal-associated protein 25 (SNAP-25) is a membrane bound protein anchored to the cytosolic face of membrane via palmitoyl side chains in the middle of the molecule . It is a component of the SNARE complex, which is proposed to account for the specificity of membrane fusion and to directly execute fusion by forming a tight complex that brings the synaptic vesicle and plasma membranes together . SNAP25 exists as two alternatively spliced isoforms, SMAP25A and SNAP25B. These isoforms are differentially expressed in neurons and neuroendocrine cells and they differ by 9 amino acids in the central portion of the protein .

Synonyms: bA416N4.2; dJ1068F16.2; RIC-4; RIC4; SEC9; SNAP; SNAP-25



[View online »](#)

Note: ~29kDa
Protein Families: Druggable Genome
Protein Pathways: SNARE interactions in vesicular transport

Product images:

Western blot analysis of SNAP25 in a human cell line mix using a 1:1000 dilution of the antibody