

Product datasheet for **TA326402**

KCNMB3 Mouse Monoclonal Antibody [Clone ID: S40B-18]

Product data:

Product Type:	Primary Antibodies
Clone Name:	S40B-18
Applications:	WB
Recommended Dilution:	WB: 1-10ug/ml, IHC: 0.1-1.0ug/ml, IF: 1.0-10ug/ml
Reactivity:	Human, Mouse, Rat
Host:	Mouse
Isotype:	IgG1
Clonality:	Monoclonal
Immunogen:	Fusion protein amino acids 1-49 (unique N-terminus) of mouse BKBeta3a
Formulation:	PBS pH7.4, 50% glycerol, 0.09% sodium azide
Concentration:	lot specific
Purification:	Protein G Purified
Conjugation:	Unconjugated
Storage:	Store at -20°C as received.
Stability:	Stable for 12 months from date of receipt.
Gene Name:	potassium calcium-activated channel subfamily M regulatory beta subunit 3
Database Link:	NP_741979 Entrez Gene 310303 RatEntrez Gene 100502876 MouseEntrez Gene 27094 Human Q9NPA1

Background: BK channels contribute to electrical impulses, proper signal transmission of information and regulation of neurotransmitter release . A gain of function mutation in the pore-forming alpha subunit of the BK channel was linked to human neurological diseases. Findings suggest that the distribution of the beta subunits in the brain can modulate the BK channels to contribute to the pathophysiology of epilepsy and dyskinesia . This has major implications on other physiological processes in tissues other than the brain.

Synonyms: BKBETA3; HBETA3; K(VCA)BETA-3; KCNMB2; KCNMBL; SLO-BETA-3; SLOBETA3

Note: Detects ~32 kDa. No cross-reactivity against BKBeta1, BKBeta1, BKBeta3b or BKBeta4.

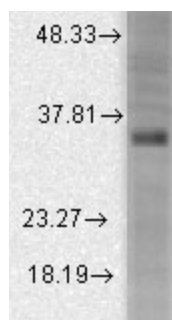


[View online »](#)

Protein Families: Druggable Genome, Ion Channels: Other, Transmembrane

Protein Pathways: Vascular smooth muscle contraction

Product images:



Western blot analysis of BKBeta3a in rat brain membrane lysates using a 1:1000 dilution of the antibody