

Product datasheet for **TA326400**

Contactin 1 (CNTN1) Mouse Monoclonal Antibody [Clone ID: S73-20]

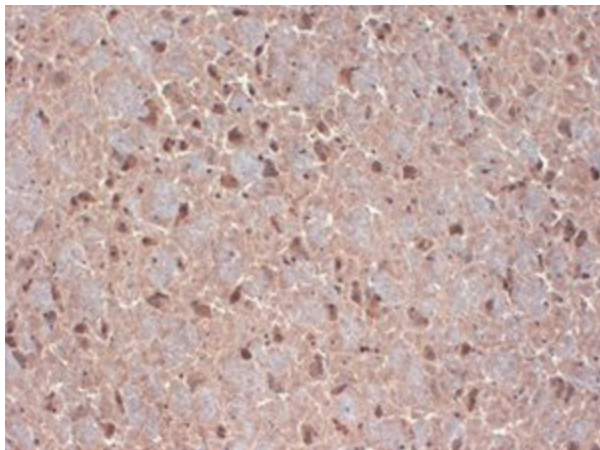
Product data:

| | |
|-----------------------|--|
| Product Type: | Primary Antibodies |
| Clone Name: | S73-20 |
| Applications: | IHC |
| Recommended Dilution: | WB: 1ug/ml, IHC: 0.1-1ug/ml, IF: 1-10ug/ml |
| Reactivity: | Human, Mouse, Rat |
| Host: | Mouse |
| Isotype: | IgG1 |
| Clonality: | Monoclonal |
| Immunogen: | Synthetic peptide amino acids 21-37 (D/EFTWHRRYGHGVSEEDKC) extracellular domain of rat contactin |
| Formulation: | PBS pH7.4, 50% glycerol, 0.09% sodium azide |
| Concentration: | lot specific |
| Purification: | Protein G Purified |
| Conjugation: | Unconjugated |
| Storage: | Store at -20°C as received. |
| Stability: | Stable for 12 months from date of receipt. |
| Gene Name: | contactin 1 |
| Database Link: | NP_778203 Entrez Gene 12805 Mouse Entrez Gene 117258 Rat Entrez Gene 1272 Human Q12860 |
| Background: | Contactin/F3, a cell adhesion molecule, is a glycosylphosphatidylinositol (GPI)-anchored protein that is expressed in neurons and glia . It has been shown to interact with and enhance surface expression of sodium channels Nav1.2 and Nav1.9. Other studies suggest that contactin coimmunoprecipitates with Nav1.3 . |
| Synonyms: | F3; GP135; MYPCN |
| Note: | Detects ~120kDa. |
| Protein Pathways: | Cell adhesion molecules (CAMs) |



[View online »](#)

Product images:



IHC analysis of Contactin/F3 in frozen sections of mouse brain extract using the antibody