

## Product datasheet for **TA326397**

### HIF1AN Mouse Monoclonal Antibody [Clone ID: FIH 162c]

#### Product data:

Product Type:	Primary Antibodies
Clone Name:	FIH 162c
Applications:	IHC, WB
Recommended Dilution:	WB: 10ug/ml
Reactivity:	Human
Host:	Mouse
Isotype:	IgG1
Clonality:	Monoclonal
Immunogen:	Full length human FIH expressed in E.coli BL21 (DE3) cells
Formulation:	PBS pH7.4, 50% glycerol, 0.09% sodium azide
Concentration:	lot specific
Purification:	Protein G Purified
Conjugation:	Unconjugated
Storage:	Store at -20°C as received.
Stability:	Stable for 12 months from date of receipt.
Gene Name:	hypoxia inducible factor 1 alpha subunit inhibitor
Database Link:	<a href="#">NP_060372</a> <a href="#">Entrez Gene 55662 Human</a> <a href="#">Q9NWT6</a>

**Background:** FIH, Factor inhibiting HIF1 (hypoxia-inducible factor), is an asparaginyl hydroxylase. FIH in conjunction with VHL represses HIF-1 transcriptional activity by disrupting the interaction of HIF-1 with the transcriptional coactivators CBP/p300, and by recruiting histone deacetylases. FIH activity is inhibited during hypoxia. Recent studies show that low nuclear expression of FIH is a strong independent prognostic factor for a poor overall survival in clear cell renal cell carcinoma.

**Synonyms:** FIH1

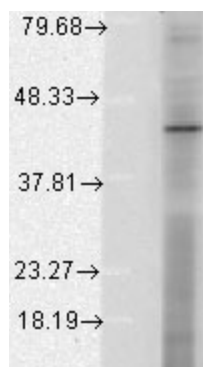


[View online »](#)

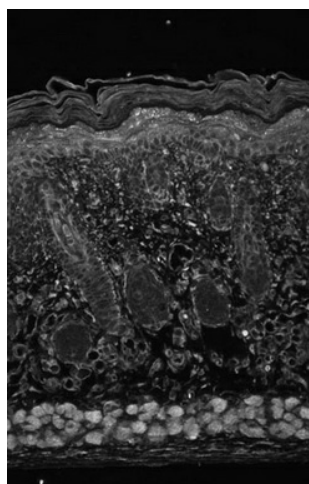
**Note:** Detects ~45kDa (human) proteins, corresponding to the molecular mass of FIH on SDS PAGE immunoblots

**Protein Families:** Druggable Genome

**Product images:**



Western blot analysis of FIH in a human cell line mix, using a 1:1000 dilution of the antibody



FIH visualized using the antibody