

Product datasheet for **TA326395**

Nucleostemin (GNL3) Rabbit Polyclonal Antibody [Clone ID: N/A]

Product data:

Product Type:	Primary Antibodies
Clone Name:	N/A
Applications:	IHC, WB
Recommended Dilution:	WB: 1:1000
Reactivity:	Human, Mouse, Rat
Host:	Rabbit
Clonality:	Polyclonal
Immunogen:	Human Hsp22
Formulation:	Rabbit antiserum
Concentration:	lot specific
Purification:	Rabbit antiserum
Conjugation:	Unconjugated
Storage:	Store at -20°C as received.
Stability:	Stable for 12 months from date of receipt.
Gene Name:	G protein nucleolar 3
Database Link:	NP_996562 Entrez Gene 30877 Mouse Entrez Gene 290556 Rat Entrez Gene 26354 Human Q9BVP2



[View online »](#)

Background:

Hsp22 (HSPB8) is a 196-amino acid protein that is a member of the small heat shock protein super-family and the human protein is most closely related to Hsp27. Similar to most other sHSPs, Hsp22 is predominately transcribed in skeletal muscle and heart, as well as the placenta . Hsp22 is a monomeric protein which interacts with HSPB1. It displays temperature-dependent chaperone activity. In a two hybrid screen, HspB8 interacted preferentially with a triple aspartate form of Hsp27 which mimics Hsp27 phosphorylated at Ser15, Ser78, and Ser82, as compared to wild-type Hsp27 . HSPB8 has two binding domains (N and C Terminal) that are specific for different binding partners, and has the ability to bind itself and other sHSPs . The chaperone-like activity is of great importance to the function of Hsp22 in various processes including proliferation, apoptosis and macroautophagy . Mutations in the HSPB8 gene are associated with the inherited peripheral neuropathies, autosomal dominant distal hereditary motor neuropathy type IIA (dSMA) and axonal Charcot-Marie-Tooth disease type 2L (CMT2L) .

Synonyms:

C77032; E2IG3; NNP47; NS

Note:

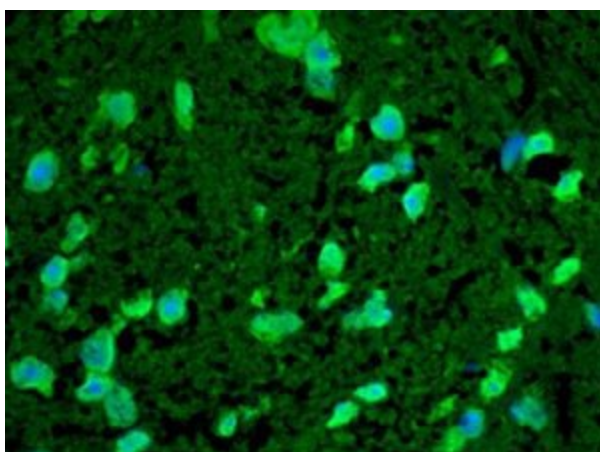
Detects ~22kDa. Does not cross-react with Hsp27 or alpha-crystallin.

Protein Families:

ES Cell Differentiation/IPS, Stem cell - Pluripotency

Product images:

Western blot analysis of Hsp22 in rat skeletal muscle lysates using 20ug of the antibody



IHC analysis of Hsp22 using the antibody