

## Product datasheet for **TA326394**

### Nucleostemin (GNL3) Mouse Monoclonal Antibody [Clone ID: 3C12-H11]

#### Product data:

Product Type:	Primary Antibodies
Clone Name:	3C12-H11
Applications:	IHC, WB
Recommended Dilution:	WB: 1:2000
Reactivity:	Human, Mouse, Rat
Host:	Mouse
Isotype:	IgG1, kappa
Clonality:	Monoclonal
Immunogen:	His-tagged human recombinant hsp22
Formulation:	PBS pH7.4, 50% glycerol, 0.09% sodium azide
Concentration:	lot specific
Purification:	Protein G Purified
Conjugation:	Unconjugated
Storage:	Store at -20°C as received.
Stability:	Stable for 12 months from date of receipt.
Gene Name:	G protein nucleolar 3
Database Link:	<a href="#">NP_996562</a> <a href="#">Entrez Gene 30877 MouseEntrez Gene 290556 RatEntrez Gene 26354 Human Q9BVP2</a>



[View online »](#)

**Background:**

Hsp22 (HSPB8) is a 196-amino acid protein that is a member of the small heat shock protein super-family and the human protein is most closely related to Hsp27. Similar to most other sHSPs, Hsp22 is predominately transcribed in skeletal muscle and heart, as well as the placenta . Hsp22 is a monomeric protein which interacts with HSPB1. It displays temperature-dependent chaperone activity. In a two hybrid screen, HspB8 interacted preferentially with a triple aspartate form of Hsp27 which mimics Hsp27 phosphorylated at Ser15, Ser78, and Ser82, as compared to wild-type Hsp27 . HSPB8 has two binding domains (N and C Terminal) that are specific for different binding partners, and has the ability to bind itself and other sHSPs . The chaperone-like activity is of great importance to the function of Hsp22 in various processes including proliferation, apoptosis and macroautophagy . Mutations in the HSPB8 gene are associated with the inherited peripheral neuropathies, autosomal dominant distal hereditary motor neuropathy type IIA (dSMA) and axonal Charcot-Marie-Tooth disease type 2L (CMT2L) .

**Synonyms:**

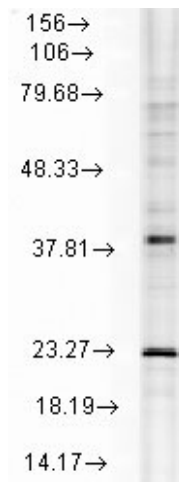
C77032; E2IG3; NNP47; NS

**Note:**

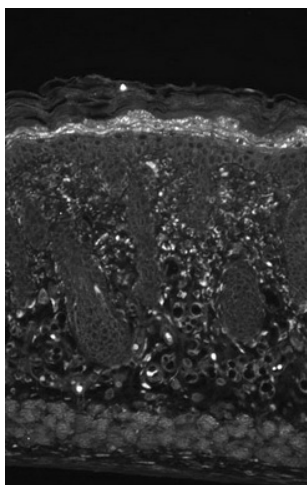
Detects endogenous and exogenous hsp22 in monomeric, dimeric and tetrameric forms in WB. Does not cross react with alpha crystallin.

**Protein Families:**

ES Cell Differentiation/IPS, Stem cell - Pluripotency

**Product images:**

Western blot analysis of Hsp22 in rat tissue mix using a 1:1000 dilution of the antibody



IHC analysis of Hsp22, tested on mouse backskin sections. Courtesy of Dr. Turksen, Ottawa Hospital Research Institute.