

Product datasheet for **TA326393**

Caspr2 (CNTNAP2) Mouse Monoclonal Antibody [Clone ID: S67-25]

Product data:

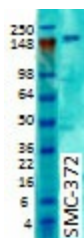
Product Type:	Primary Antibodies
Clone Name:	S67-25
Applications:	IHC, WB
Recommended Dilution:	WB: 1ug/ml, IHC: 0.1-1ug/ml, IF: 1-10ug/ml
Reactivity:	Human, Mouse, Rat
Host:	Mouse
Isotype:	IgG2a
Clonality:	Monoclonal
Immunogen:	Fusion protein 96-1265 (extracellular domain) of human CASPR2
Formulation:	PBS pH7.4, 50% glycerol, 0.09% sodium azide
Concentration:	lot specific
Purification:	Protein G Purified
Conjugation:	Unconjugated
Storage:	Store at -20°C as received.
Stability:	Stable for 12 months from date of receipt.
Gene Name:	contactin associated protein-like 2
Database Link:	NP_054860 Entrez Gene 66797 Mouse Entrez Gene 500105 Rat Entrez Gene 26047 Human Q9UHC6
Background:	Caspr (contactin-associated protein) is a part of the neurexin family. It lies in the paranodal section of the myelin sheath. Its role is for myelin sheath attachment along with contactin in a cis-complex. Caspr and Caspr2 regulate the formation of distinct axonal domains around the nodes of Ranvier. Caspr is required for the generation of a membrane barrier at the paranodal junction, whereas Caspr serves as a membrane scaffold that clusters Kv1 channels at the juxtaparanodal region. Both interact with protein 4.1B.
Synonyms:	AUTS15; CASPR2; CDFE; NRXN4; PTHSL1
Note:	Detects ~180kDa. No cross reactivity to CASPR/Paranodin


[View online »](#)

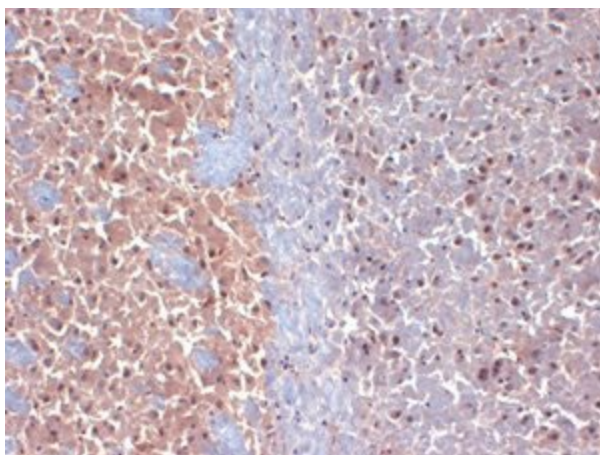
Protein Families: Druggable Genome, Transmembrane

Protein Pathways: Cell adhesion molecules (CAMs)

Product images:



Western blot analysis of CASPR2 on rat brain membrane tissues using a 1:1000 dilution of the antibody



IHC analysis of CASPR2 in frozen sections of mouse brain using the antibody