

Product datasheet for **TA326392**

Hsp105 (HSPH1) Rabbit Polyclonal Antibody [Clone ID: N/A]

Product data:

Product Type:	Primary Antibodies
Clone Name:	N/A
Applications:	WB
Recommended Dilution:	WB: 1:1000
Reactivity:	Human, Monkey, Hamster, Rat, Mouse, Sheep, Yeast, Cow
Host:	Rabbit
Clonality:	Polyclonal
Immunogen:	Synthetic peptide derived from the sequence of hamster Hsp110; sequence identical to human and mouse
Formulation:	PBS pH7.2, 50% glycerol, 0.09% sodium azide
Concentration:	lot specific
Purification:	Affinity Purified
Conjugation:	Unconjugated
Storage:	Store at -20°C as received.
Stability:	Stable for 12 months from date of receipt.
Gene Name:	heat shock protein family H (Hsp110) member 1
Database Link:	NP_006635 Entrez Gene 15505 Mouse Entrez Gene 288444 Rat Entrez Gene 721956 Monkey Entrez Gene 10808 Human Q92598



[View online »](#)

Background:

Hsp110 belongs to a family of large stress proteins known as the Hsp110/SSE Family. The proteins in this family are the most distantly known relatives of the well studied Hsp70 family. They share 30-33% amino acid identity, mostly in the conserved ATP-binding domain. Hsp110 cooperates with Hsp70 in protein folding in the eukaryotic cytosol. In mammals, Hsp110 is constitutively expressed, but exhibits particularly high levels in the brain. Both Hsp70 and Hsp110 are elevated after cerebral ischemia. Recent studies demonstrate that the protective effects of Hsp110 deficiency in cerebral ischemia may partly be mediated by an increase in the chaperone activity of Hsp70. Studies also suggest that Hsp110 can be used in heat shock protein-based cancer immunotherapy.

Synonyms:

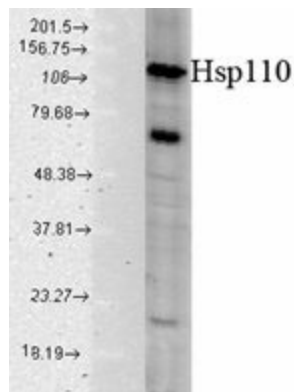
HSP105; HSP105A; HSP105B; NY-CO-25

Note:

Detects ~110kDa

Protein Families:

Stem cell - Pluripotency

Product images:

Western blot analysis of Hsp110 in a human cell mix using a 1:1000 dilution of the antibody