

Product datasheet for **TA326391**

p23 (PTGES3) Mouse Monoclonal Antibody [Clone ID: JJ6]

Product data:

Product Type:	Primary Antibodies
Clone Name:	JJ6
Applications:	WB
Recommended Dilution:	WB: 1:2000
Reactivity:	Human, Mouse, Rabbit, Chicken, Guinea Pig, Saccharomyces cerevisiae
Host:	Mouse
Isotype:	IgG1
Clonality:	Monoclonal
Immunogen:	Recombinant Human full length p23 protein
Formulation:	PBS, 50% glycerol, 0.09% sodium azide
Concentration:	lot specific
Purification:	Protein G Purified
Conjugation:	Unconjugated
Storage:	Store at -20°C as received.
Stability:	Stable for 12 months from date of receipt.
Gene Name:	prostaglandin E synthase 3
Database Link:	NP_006592 Entrez Gene 56351 Mouse Entrez Gene 10728 Human Q15185



[View online »](#)

Background:

p23 is a highly conserved ubiquitous protein, known to have an important function as a cochaperone for the hsp90 chaperoning system . Studies have revealed that p23 is a small protein (18 to 25 kDa) with a simple structure . p23 does not have any structural homology with any other known proteins . p23 was first discovered as a part of the Hsp90-progesterone receptor complex along with hsp70, p54 and p50 . p23 is a phosphor-protein, which is highly acidic and has an aspartic acid-rich c-terminal domain . Numerous studies have found p23 to be associated with other client proteins like Fes tyrosine kinase , the heme regulated kinase HRI , hsf1 transcription factor , aryl hydrocarbon receptor , telomerase , and Hepadnavirus reverse transcriptase . In spite of several years of study, the exact functional significance of p23 is still not clear . p23 is thought to be involved in the adenosine triphosphatemediated hsp90 binding of client proteins . Since many hsp90 client proteins are involved in oncogenic survival signaling, a recent study has concluded p23 to be a promising target in leukemic apoptosis . Hsp90 and its co-chaperone p23 are certainly among the emerging anti-tumor targets in oncology.

Synonyms:

cPGES; P23; TEBP

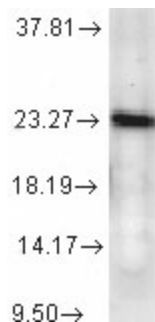
Note:

Detects ~23kDa.

Protein Families:

Druggable Genome, Nuclear Hormone Receptor

Product images:



Western blot analysis of p23 in a human cell line mix at a 1:1000 dilution of the antibody