

Product datasheet for **TA326388**

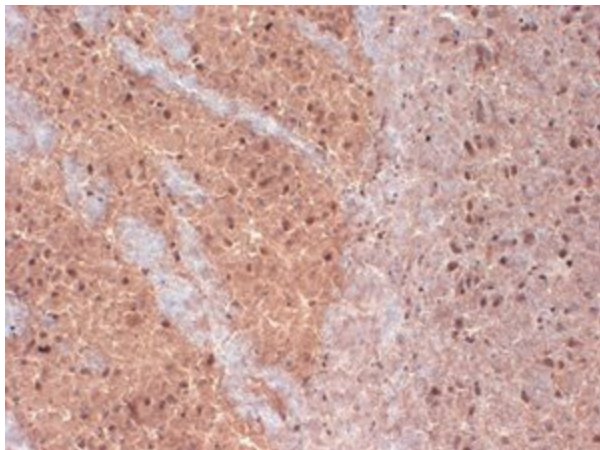
Kv beta 1 (KCNAB1) Mouse Monoclonal Antibody [Clone ID: S47-42]

Product data:

Product Type:	Primary Antibodies
Clone Name:	S47-42
Applications:	IHC
Recommended Dilution:	WB: 1ug/ml, IHC: 0.1-1ug/ml, ICC: 0.1-1ug/ml
Reactivity:	Human, Mouse, Rat
Host:	Mouse
Isotype:	IgG1
Clonality:	Monoclonal
Immunogen:	Synthetic peptide amino acids 9-28 (ADIPSPKLGPKSSESALKC, unique N-terminus) of rat KvBeta1.2
Formulation:	PBS pH7.4, 50% glycerol, 0.09% sodium azide
Concentration:	lot specific
Purification:	Protein G Purified
Conjugation:	Unconjugated
Storage:	Store at -20°C as received.
Stability:	Stable for 12 months from date of receipt.
Gene Name:	potassium voltage-gated channel subfamily A member regulatory beta subunit 1
Database Link:	NP_751891 Entrez Gene 16497 Mouse Entrez Gene 29737 Rat Entrez Gene 7881 Human Q14722
Background:	Depolarization-activated potassium channels (Kv) play a major role in shaping the electrical signals in the nervous system . KvBeta isoforms form a heteromultimeric complex with alpha subunits and modulate the activity of the pore-forming alpha subunits .
Synonyms:	AKR6A3; hKvb3; hKvBeta3; KCNA1B; KV-BETA-1; Kvb1.3
Note:	Detects ~65kDa.
Protein Families:	Druggable Genome, Ion Channels: Other



[View online »](#)

Product images:

IHC analysis of KvBeta 1.2 in frozen sections of mouse brain extract using the antibody