

Product datasheet for **TA326386**

VAMP1 Mouse Monoclonal Antibody [Clone ID: SP-11]

Product data:

Product Type:	Primary Antibodies
Clone Name:	SP-11
Applications:	IHC, WB
Recommended Dilution:	WB: 0.5-1ug/ml
Reactivity:	Human
Host:	Mouse
Isotype:	IgG1
Clonality:	Monoclonal
Immunogen:	Crude human synaptic immunoprecipitate
Formulation:	PBS pH7.4, 50% glycerol
Concentration:	lot specific
Purification:	Protein G Purified
Conjugation:	Unconjugated
Storage:	Store at -20°C as received.
Stability:	Stable for 12 months from date of receipt.
Gene Name:	vesicle associated membrane protein 1
Database Link:	NP_954740 Entrez Gene 6843 Human P23763

Background: VAMP-1, also known as vesicle-associated membrane protein, is an 18kDa member of the synaptobrevin family of proteins. It is expressed in neurons, neutrophils, and skeletal muscle cells, and participates in vesicle fusion with the plasma membrane. Synaptobrevins, Syntakins and the 25kDa synaptosomal associated SNAP25 are the main components of a protein complex involved in the docking and/or fusion of synaptic vesicles with the presynaptic membrane. VAMP-1 is also one of the key proteins in the SNARE complex which is involved in regulated exocytosis.

Synonyms: SPAX1; SYB1; VAMP-1



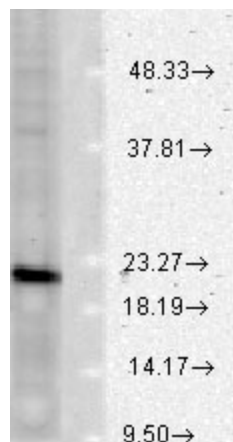
[View online »](#)

Note: Recognizes the human synaptic vesicle protein synaptobrevin, VAMP, Recognizes VAMP 1 and 2

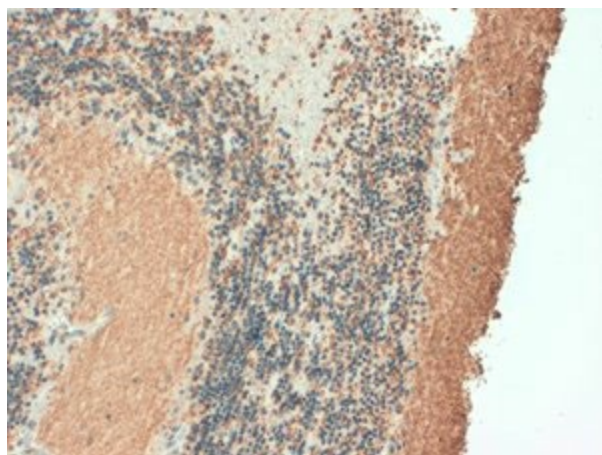
Protein Families: Secreted Protein, Transmembrane

Protein Pathways: SNARE interactions in vesicular transport

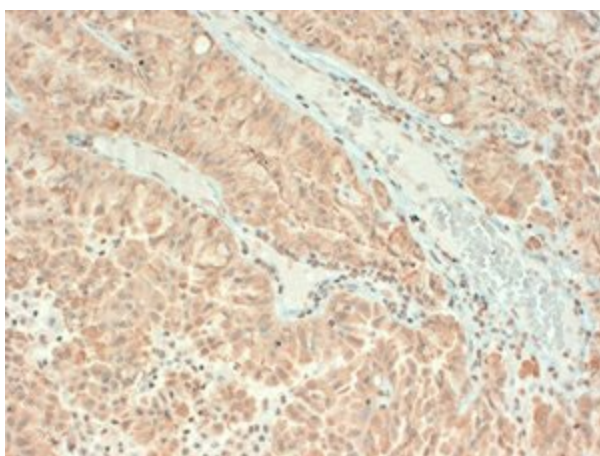
Product images:



Western blot analysis of VAMP1/2 in rat brain tissues, using a 1:1000 dilution of the antibody



IHC analysis of VAMP1/2 using the antibody



IHC analysis of VAMP1/2 using the antibody