

Product datasheet for **TA326381**

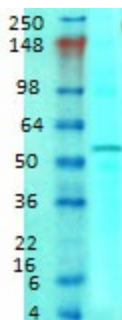
EAAT3 (SLC1A1) Mouse Monoclonal Antibody [Clone ID: S180-41]

Product data:

Product Type:	Primary Antibodies
Clone Name:	S180-41
Applications:	WB
Reactivity:	Human
Host:	Mouse
Isotype:	IgG1
Clonality:	Monoclonal
Immunogen:	Fusion protein amino acids 1-524 (full length) of human EAAC1
Formulation:	PBS pH7.4, 50% glycerol
Concentration:	lot specific
Purification:	Protein G Purified
Conjugation:	Unconjugated
Storage:	Store at -20°C as received.
Stability:	Stable for 12 months from date of receipt.
Gene Name:	solute carrier family 1 member 1
Database Link:	NP_004161 Entrez Gene 6505 Human P43005
Background:	SLC1A1/EAAT3/EAAC1, a member of this transporter family, is expressed throughout the body, particularly in brain, intestine, liver, heart and kidney. Functional defects of the SLC1A1 gene are found in patients of dicarboxylic amino aciduria.
Synonyms:	DCBXA; EAAC1; EAAT3; SCZD18
Note:	Detects ~60kDa.
Protein Families:	Druggable Genome, Transmembrane



[View online »](#)

Product images:

Western blot analysis of EAAC1 in rat brain membrane tissues, using a 1:1000 dilution of the antibody