

Product datasheet for **TA326364**

Grp75 (HSPA9) Mouse Monoclonal Antibody [Clone ID: S52A-42]

Product data:

Product Type:	Primary Antibodies
Clone Name:	S52A-42
Applications:	WB
Recommended Dilution:	WB (colorimetric): 1:1000
Reactivity:	Human, Mouse, Rat
Host:	Mouse
Isotype:	IgG1
Clonality:	Monoclonal
Immunogen:	Peptide immunogen to SALM2
Formulation:	PBS pH7.2, 50% glycerol
Concentration:	lot specific
Purification:	Protein G Purified
Conjugation:	Unconjugated
Storage:	Store at -20°C as received.
Stability:	Stable for 12 months from date of receipt.
Gene Name:	heat shock protein family A (Hsp70) member 9
Database Link:	NP_004125 Entrez Gene 15526 Mouse Entrez Gene 291671 Rat Entrez Gene 3313 Human P38646



[View online »](#)

Background:

Grp75, also known as mortalin, is a member of Hsp70 family of chaperone proteins that is not heat inducible . Grp75 is actually induced under conditions of low glucose and other nutritional and environmental stresses. Grp75 resides primarily in the mitochondrial matrix, where it collaborates with Hsp60 in the re-folding of proteins translocated into this organelle . Related forms may also be found in the cytosol or on the surface of the extracellular membrane. Other Grp75 functions include its ability to inactivate the tumor suppressor p53 . Studies have found that Grp75 is over-expressed in many tumor tissues and immortalized human cell lines, suggesting its role in the tumor formation . Grp75 is also implicated in cell aging, as its overexpression appears to prolong the life span of human fibroblasts . And finally, like its E.coli homolog DnaK , GRP75 possesses a cation-dependent ATPase activity considered central to its function as a chaperone .

Synonyms:

CSA; GRP-75; GRP75; HEL-S-124m; HSPA9B; MOT; MOT2; MTHSP75; PBP74

Note:

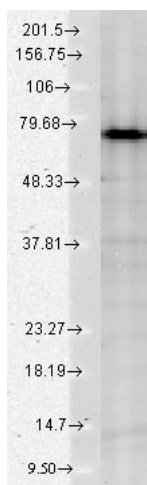
Detects ~75kDa.

Protein Families:

Stem cell - Pluripotency

Protein Pathways:

RNA degradation

Product images:

Western blot analysis of Grp75 in HeLa cell lysates using a 1:1000 dilution of the antibody